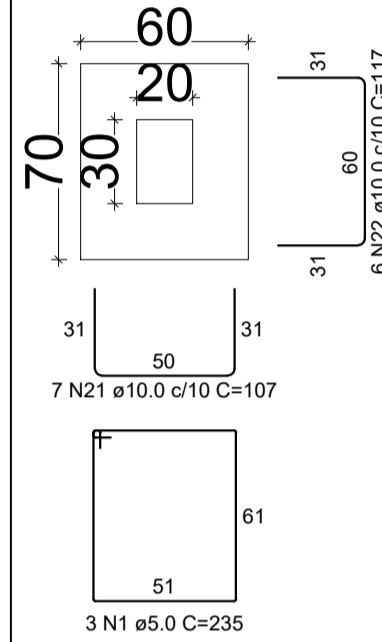
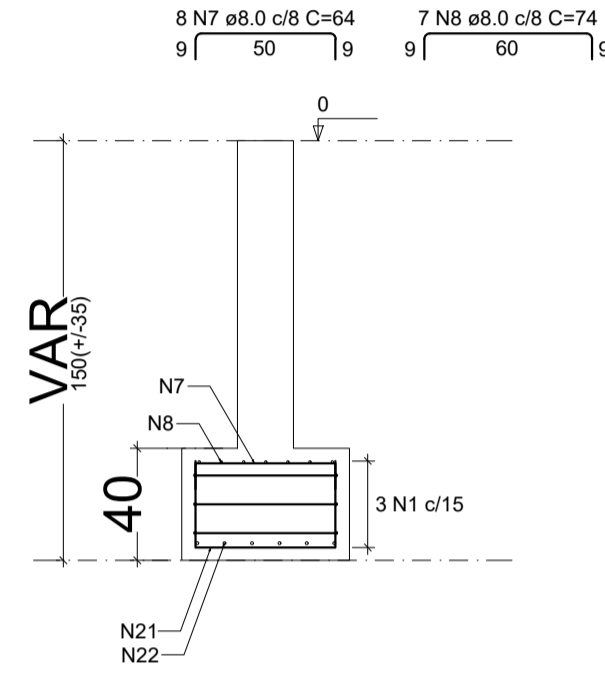


S1=S8  
PLANTA  
ESC 1:25

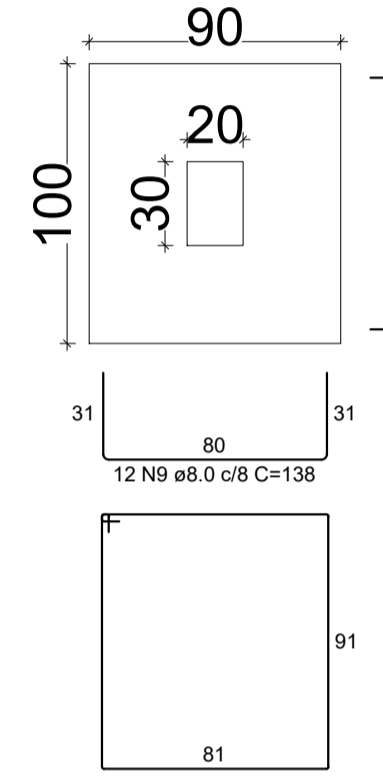


Solo com capacidade de suporte > 1.50 kgf/cm<sup>2</sup>  
Solo compactado sobre a sapata  
peso específico > 1600.00 kgf/m<sup>3</sup>

CORTE  
ESC 1:25

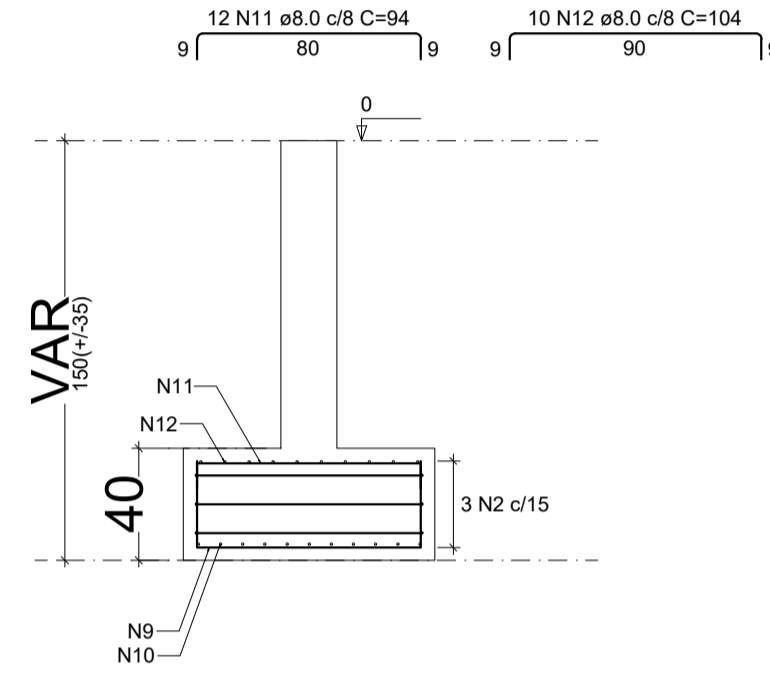


S2=S9  
PLANTA  
ESC 1:25

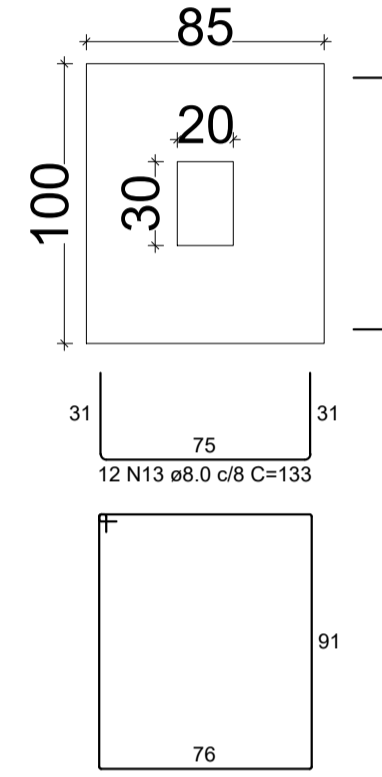


Solo com capacidade de suporte > 1.50 kgf/cm<sup>2</sup>  
Solo compactado sobre a sapata  
peso específico > 1600.00 kgf/m<sup>3</sup>

CORTE  
ESC 1:25

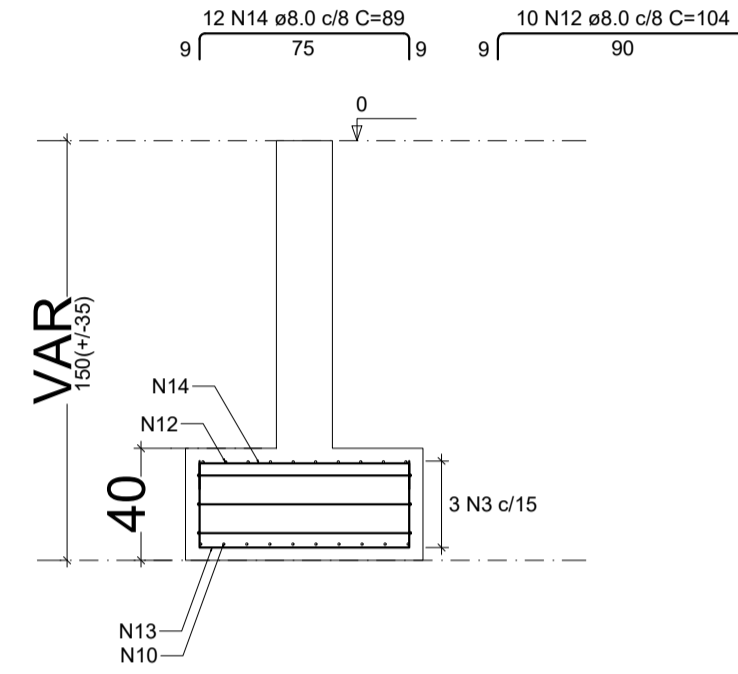


S3=S6=S10=S13  
PLANTA  
ESC 1:25

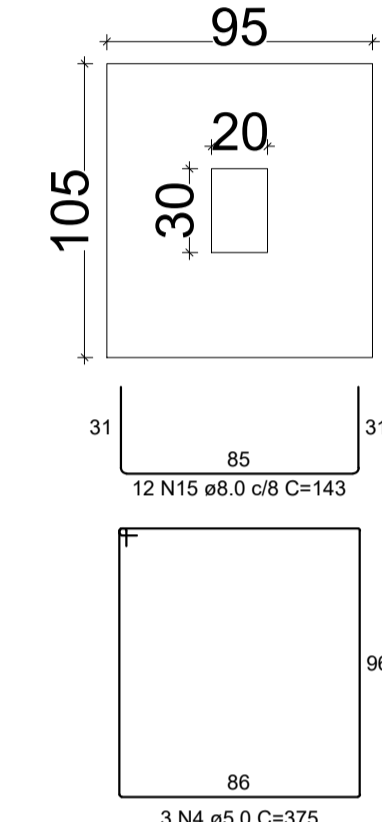


Solo com capacidade de suporte > 1.50 kgf/cm<sup>2</sup>  
Solo compactado sobre a sapata  
peso específico > 1600.00 kgf/m<sup>3</sup>

CORTE  
ESC 1:25

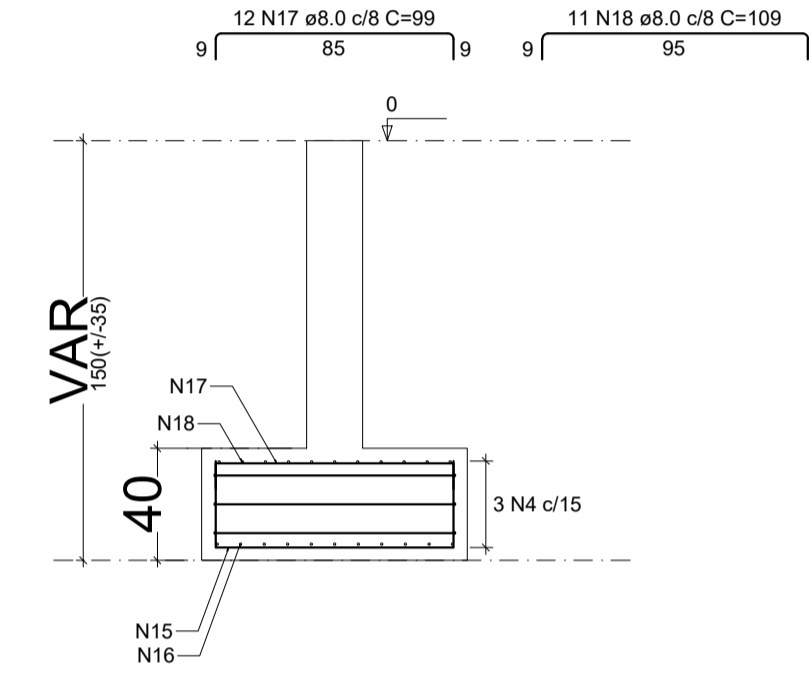


S4=S11  
PLANTA  
ESC 1:25

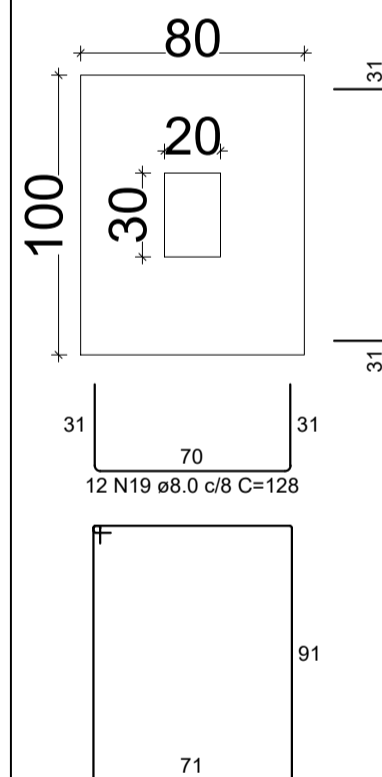


Solo com capacidade de suporte > 1.50 kgf/cm<sup>2</sup>  
Solo compactado sobre a sapata  
peso específico > 1600.00 kgf/m<sup>3</sup>

CORTE  
ESC 1:25

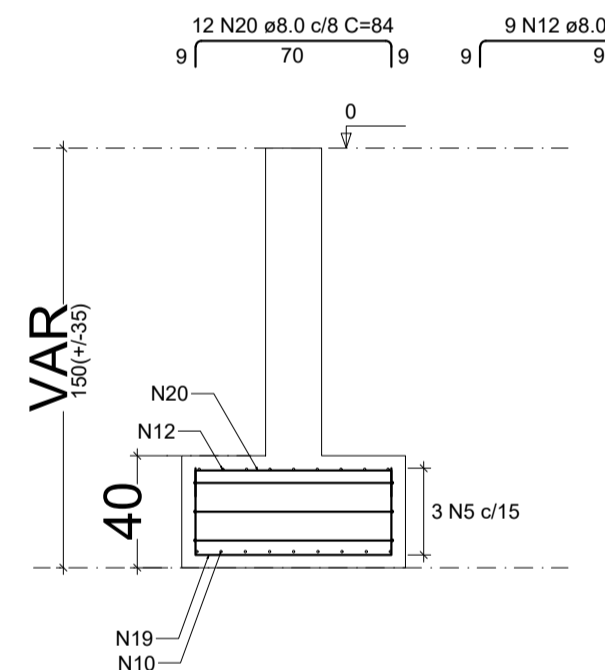


S5=S12  
PLANTA  
ESC 1:25

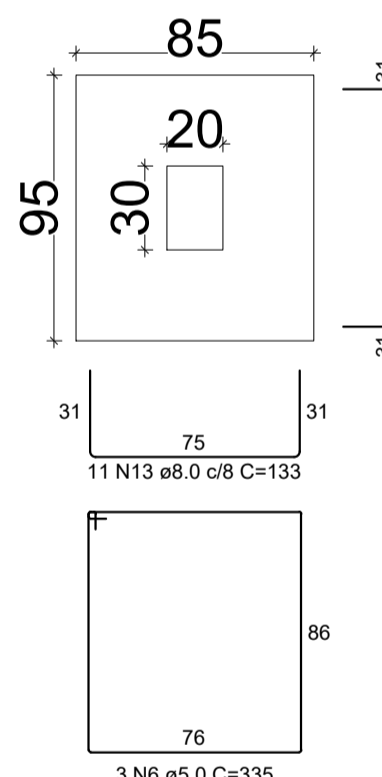


Solo com capacidade de suporte > 1.50 kgf/cm<sup>2</sup>  
Solo compactado sobre a sapata  
peso específico > 1600.00 kgf/m<sup>3</sup>

CORTE  
ESC 1:25

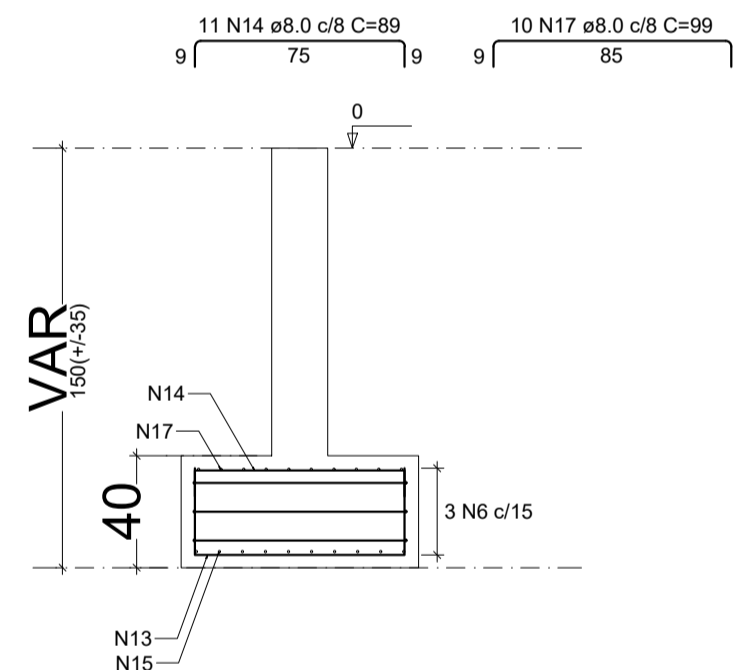


S7=S14  
PLANTA  
ESC 1:25

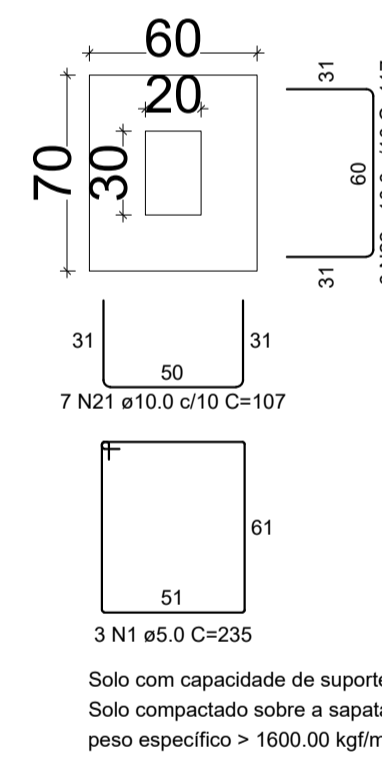


Solo com capacidade de suporte > 1.50 kgf/cm<sup>2</sup>  
Solo compactado sobre a sapata  
peso específico > 1600.00 kgf/m<sup>3</sup>

CORTE  
ESC 1:25

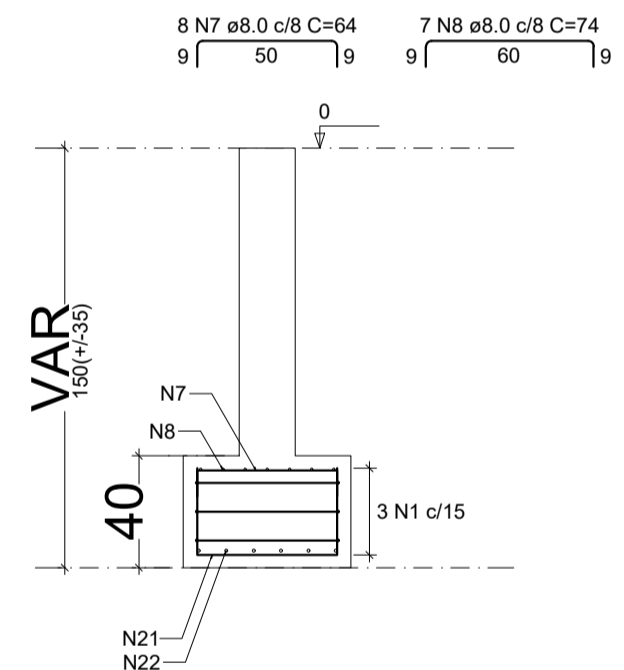


S15=S16=S17=S19=S20  
PLANTA  
ESC 1:25

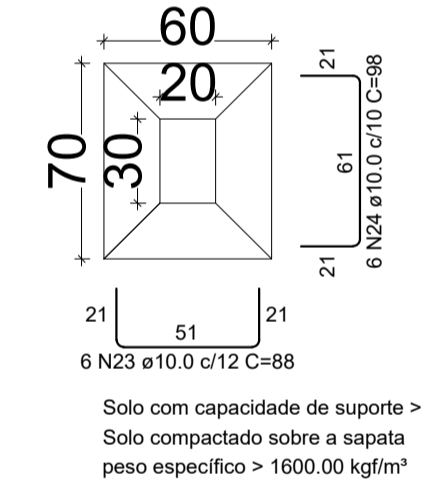


Solo com capacidade de suporte > 1.50 kgf/cm<sup>2</sup>  
Solo compactado sobre a sapata  
peso específico > 1600.00 kgf/m<sup>3</sup>

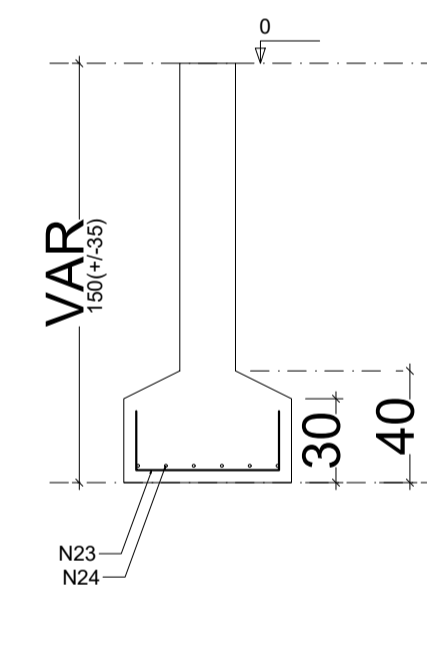
CORTE  
ESC 1:25



S18  
PLANTA  
ESC 1:25



CORTE  
ESC 1:25



RELAÇÃO DO AÇO

AÇO	N	DIAM (mm)	QUANT	C. UNIT (cm)	C. TOTAL (cm)
CA60	1	5.0	21	235	4935
	2	5.0	6	355	2130
	3	5.0	12	345	4140
	4	5.0	6	375	2250
	5	5.0	6	335	2010
	6	5.0	6	335	2010
CA50	7	8.0	56	64	3584
	8	8.0	49	74	3626
	9	8.0	24	138	3312
	10	8.0	80	148	11840
	11	8.0	24	94	2256
	12	8.0	78	104	8112
	13	8.0	70	133	9310
	14	8.0	70	89	6230
	15	8.0	44	143	6292
	16	8.0	22	153	3366
	17	8.0	44	99	4356
	18	8.0	22	109	2398
	19	8.0	24	128	3072
	20	8.0	24	84	2016
	21	10.0	49	107	5243
	22	10.0	42	117	4914
	23	10.0	6	88	528
	24	10.0	6	98	588

RESUMO DO AÇO

AÇO	DIAM (mm)	C. TOTAL (m)	PESO + 10% (kg)
CA50	8.0	697.7	302.8
CA60	5.0	174.8	76.5
PESO TOTAL (kg)			
CA50		379.3	
CA60		29.6	
Volume de concreto (C=30) = 5.49 m <sup>3</sup>			
Área de forma = 25.96 m <sup>2</sup>			



**PREFEITURA MUNICIPAL DE IPIXUNA DO PARÁ**  
EQUIPE TÉCNICA  
GESTOR MUNICIPAL : **Artemes da Silva Oliveira**  
SECRETÁRIO MUNICIPAL DE OBRAS : **Warty Freitas**  
Engenheiro Responsável:  
**Engº Anmerson da Cruz Peixoto**  
Confea 150630033-2

**PREFEITURA DE IPIXUNA DO PARÁ**  
**GALPÃO DO PRODUTOR RURAL**

PLANTA BAIXA - COBERTURA  
EDIFICAÇÃO EXISTENTE

Número do projeto **07/10**  
Data **29.06.2022**  
Engº Resp. Tec. Anmerson da Cruz Peixoto  
Eng.Projetista Anmerson da Cruz Peixoto

FUNDAÇÃO - DETALHAMENTO  
Escala **Indicada**