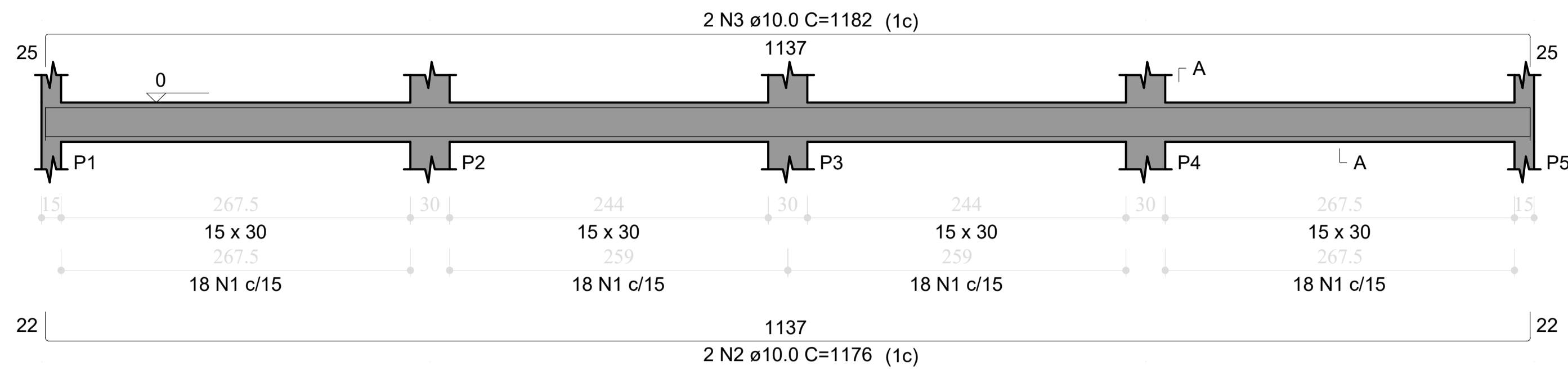
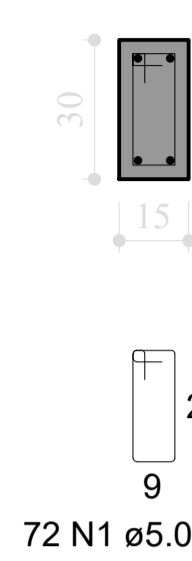


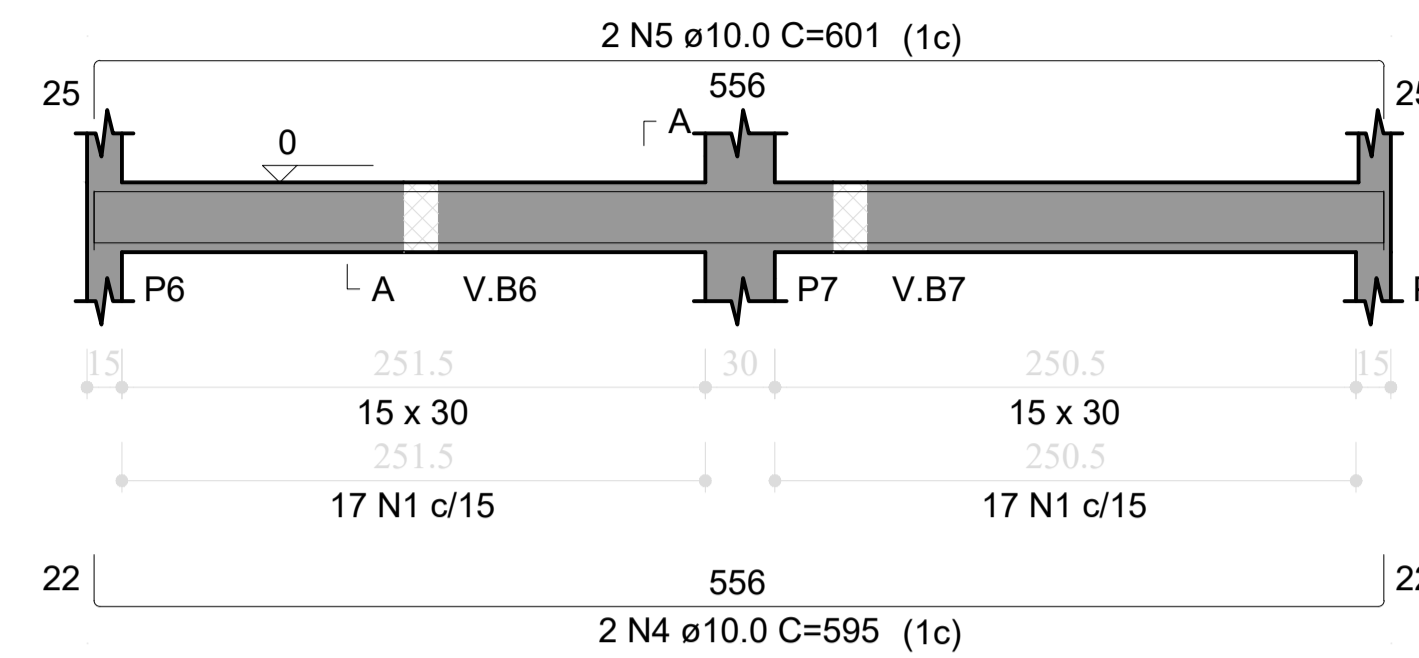
V.B1
ESC 1:50



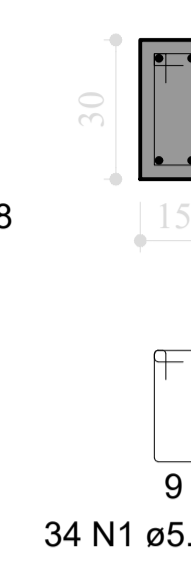
SEÇÃO A-A
ESC 1:25



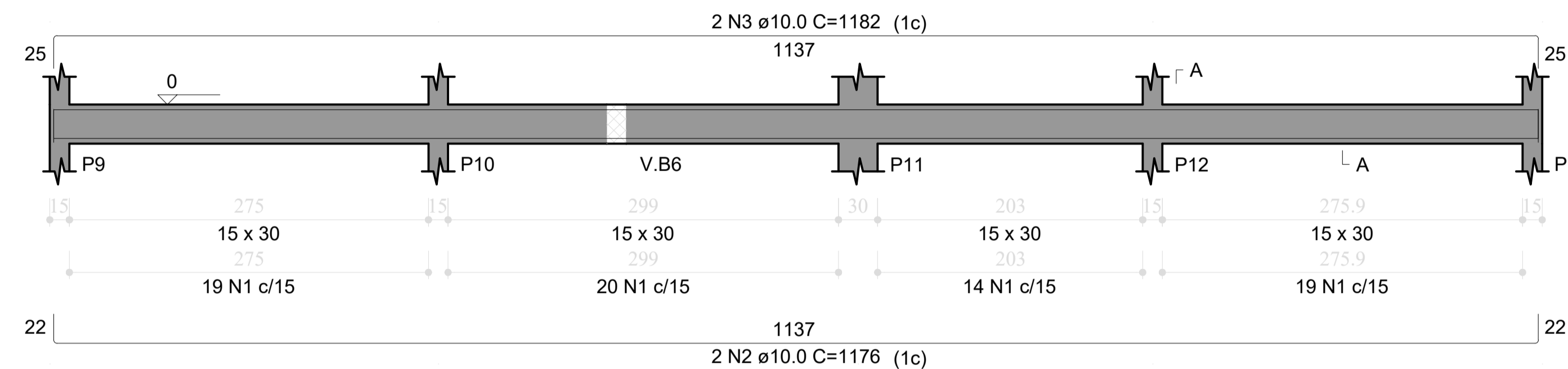
V.B2
ESC 1:50



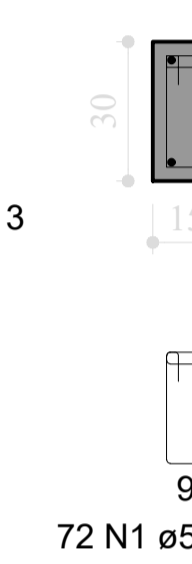
SEÇÃO A-A
ESC 1:25



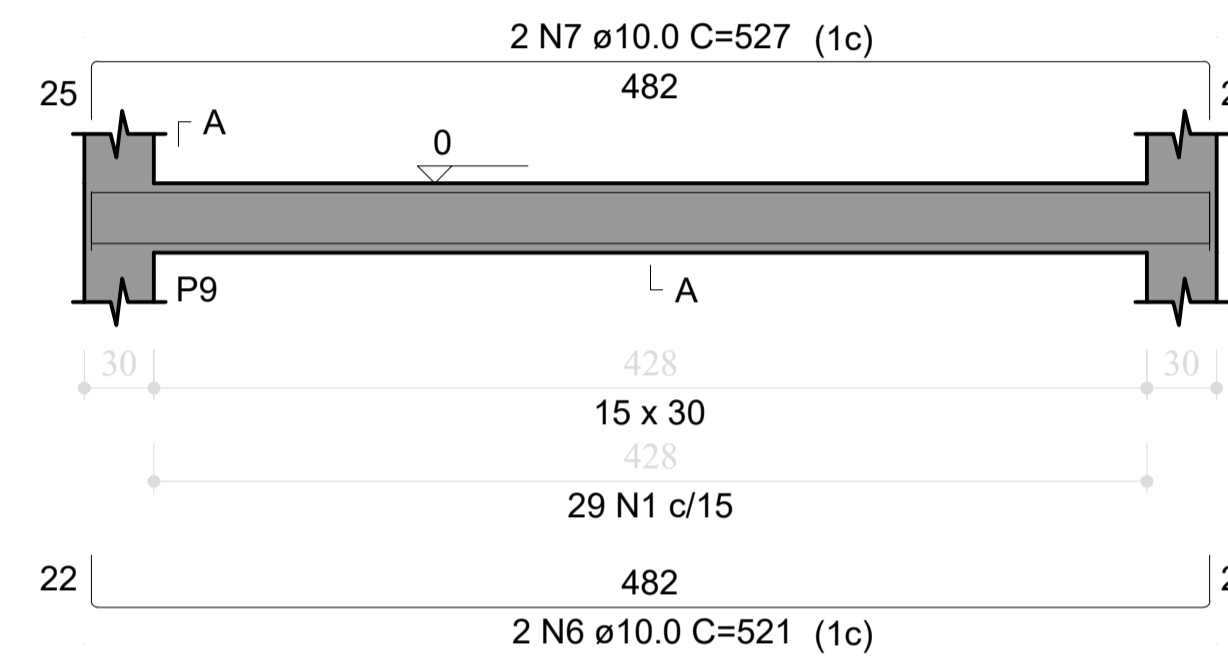
V.B3
ESC 1:50



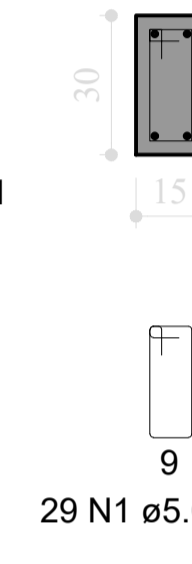
SEÇÃO A-A
ESC 1:25



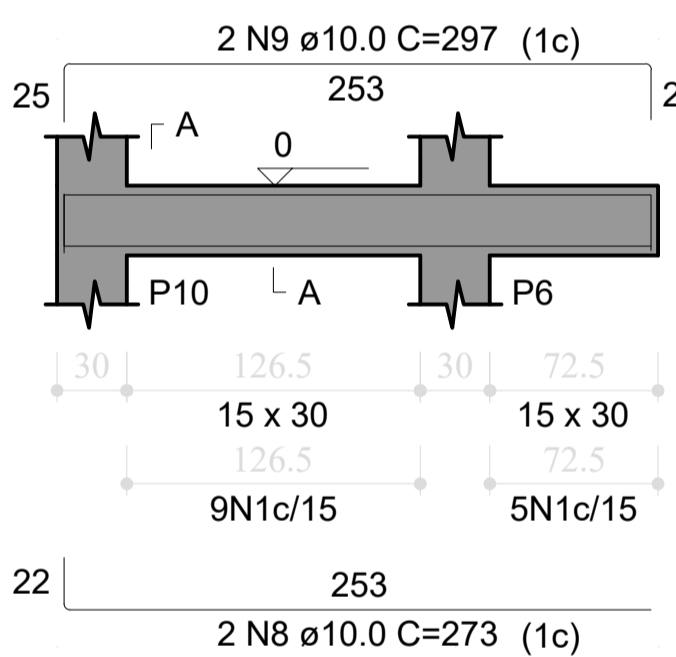
V.B4
ESC 1:50



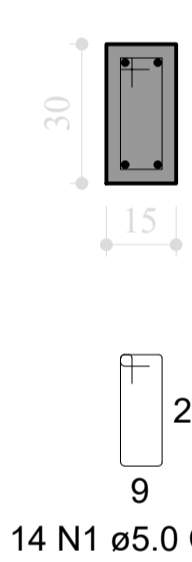
SEÇÃO A-A
ESC 1:25



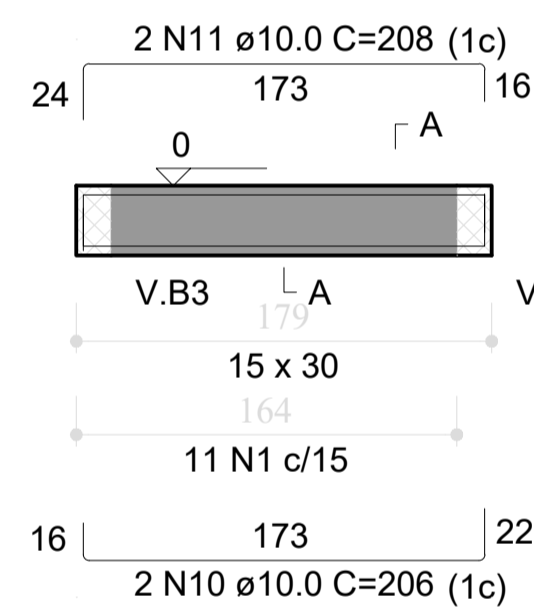
V.B5
ESC 1:50



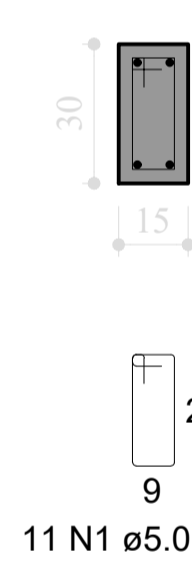
SEÇÃO A-A
ESC 1:25



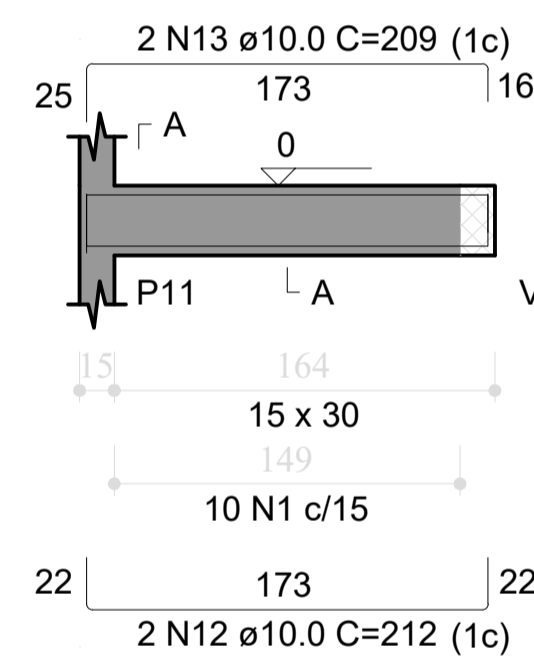
V.B6
ESC 1:50



SEÇÃO A-A
ESC 1:25



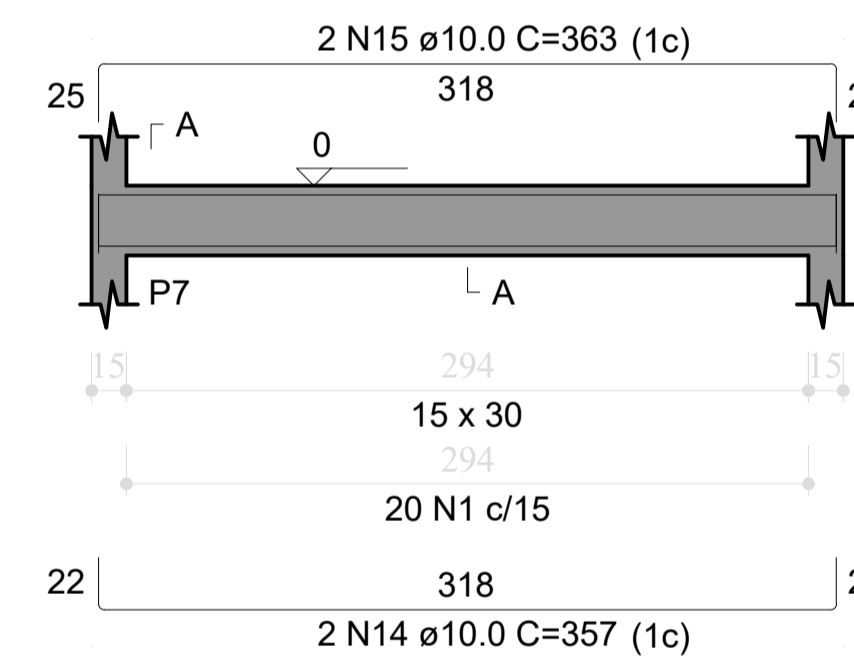
V.B7
ESC 1:50



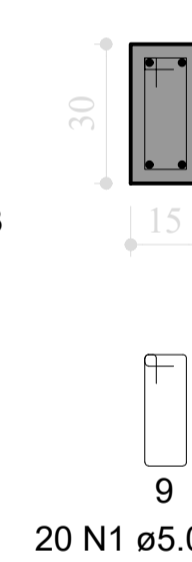
SEÇÃO A-A
ESC 1:25



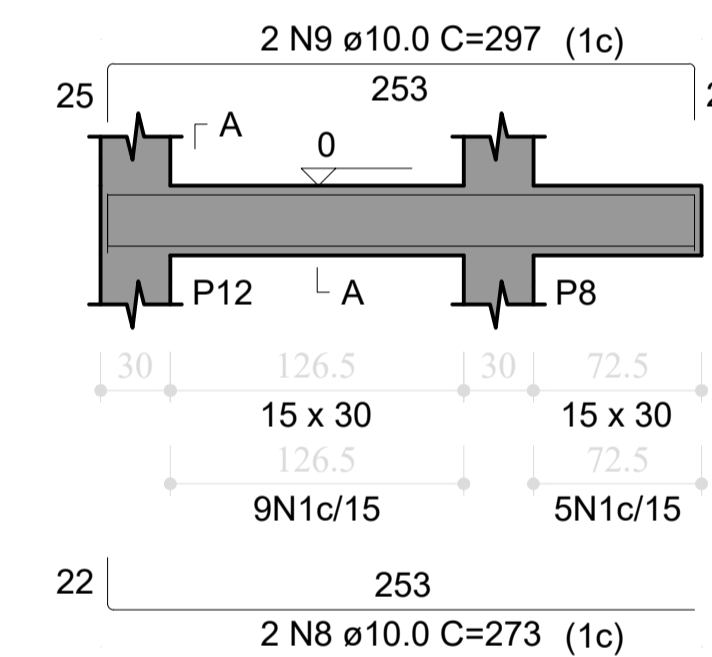
V.B8
ESC 1:50



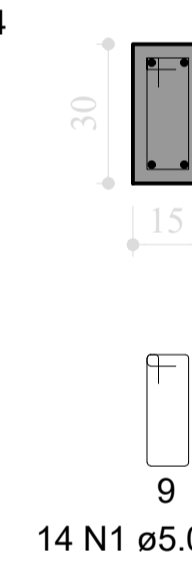
SEÇÃO A-A
ESC 1:25



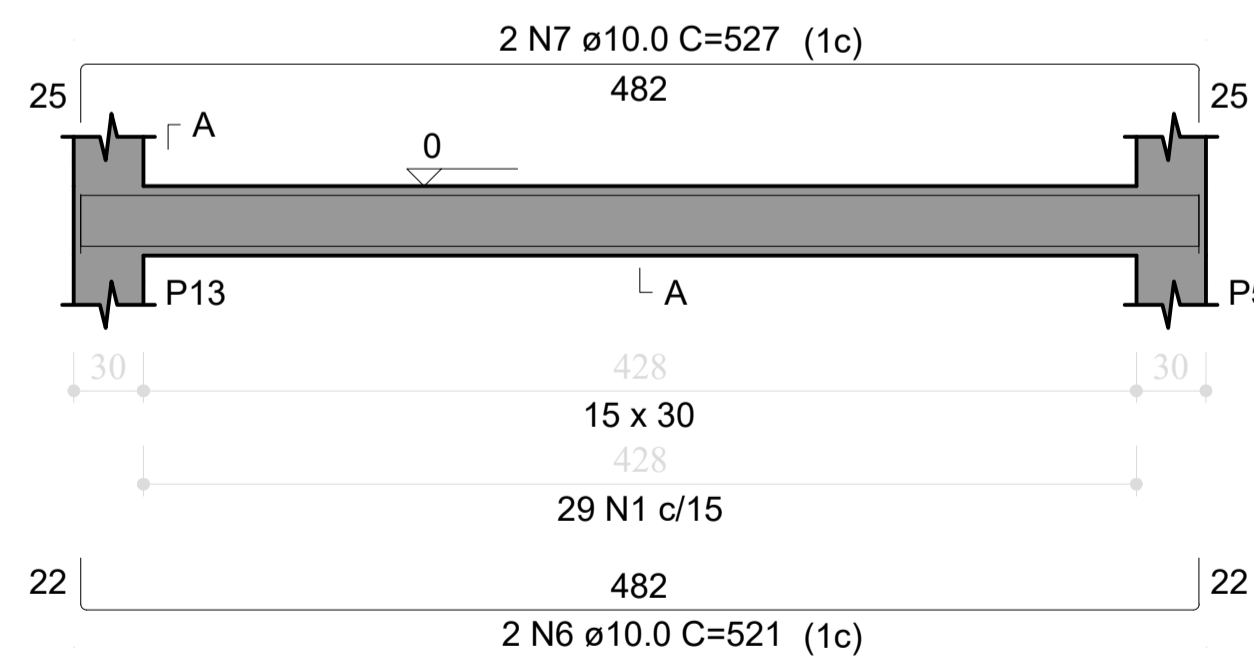
V.B9
ESC 1:50



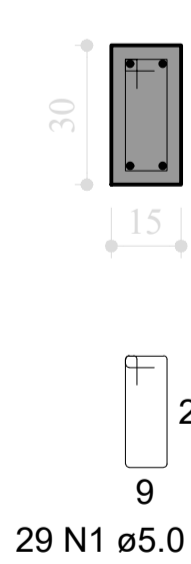
SEÇÃO A-A
ESC 1:25



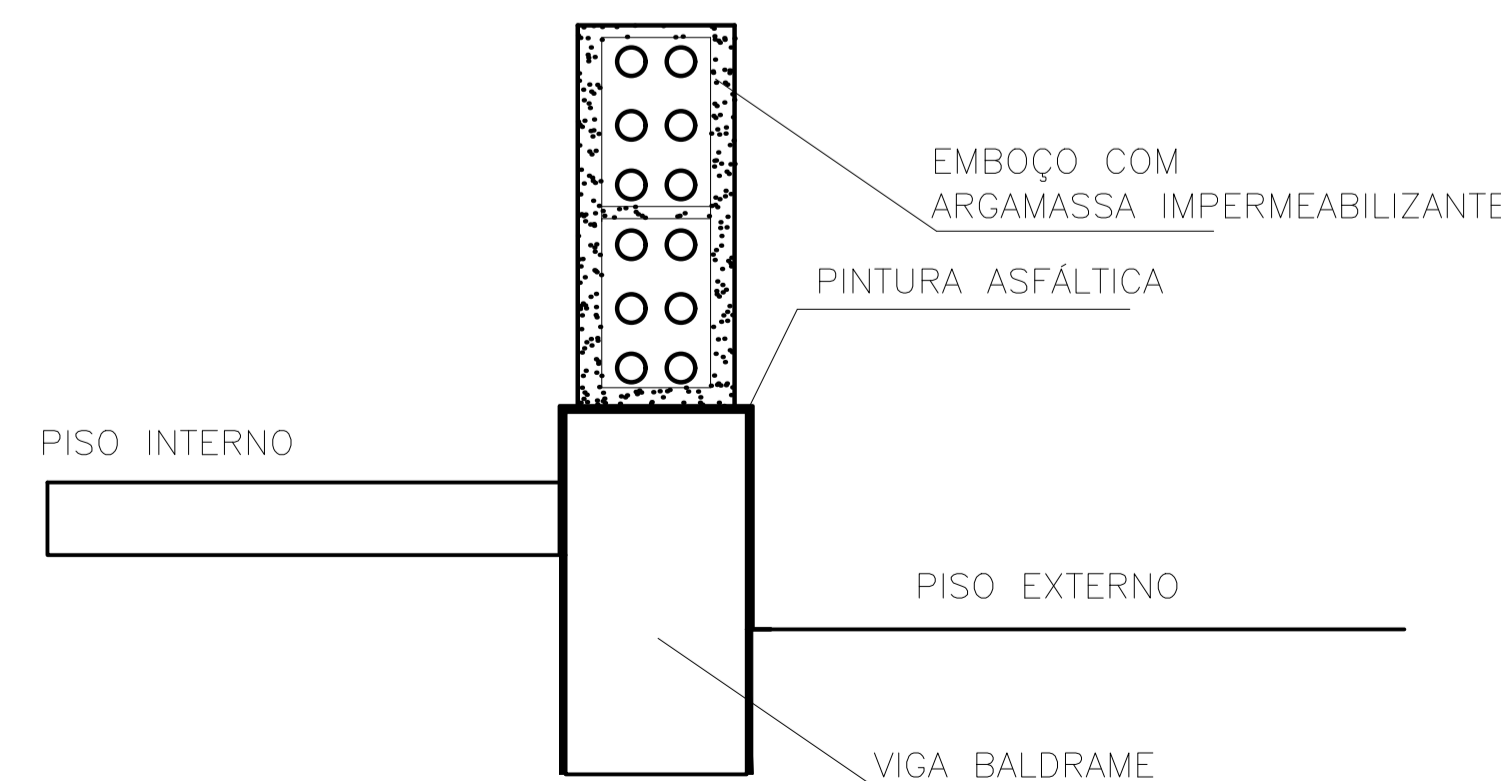
V.B10
ESC 1:50



SEÇÃO A-A
ESC 1:25



IMPERMEABILIZAÇÕES:
SEÇÕES DE BALDRAME



RELAÇÃO DO AÇO

AÇO	N	DIAM (mm)	QUANT	C.UNIT (cm)	C.TOTAL (cm)
CA60	1	5.0	305	77	23485
CA50	2	10.0	4	1176	4704
	3	10.0	4	1182	4728
	4	10.0	2	595	1190
	5	10.0	2	601	1202
	6	10.0	4	521	2084
	7	10.0	4	527	2108
	8	10.0	4	273	1092
	9	10.0	4	297	1188
	10	10.0	2	206	412
	11	10.0	2	208	416
	12	10.0	2	212	424
	13	10.0	2	209	418
	14	10.0	2	357	714
	15	10.0	2	363	726

RESUMO DO AÇO

AÇO	DIAM (mm)	C.TOTAL (m)	PESO + 10% (kg)
CA50	10.0	214.1	145.2
CA60	5.0	234.8	39.8
PESO TOTAL (kg)			
CA50			145.2
CA60			39.8

Volume de concreto (C-25) = 2.26 m³
Área de forma = 37.68 m²

RESPONSÁVEL TÉCNICO:
ALICE CATARINA OLIVEIRA DE MORAIS
ENGENHEIRA CIVIL
CREA/PA 151866/032

PREFEITURA IPIXUNA DO PARA
Nossa cidade, nosso compromisso!

ESTABELECIMENTO: ESCOLA NOVA
ENDEREÇO: _____ LOTE _____

PROJETO ESTRUTURAL

DESCRIÇÃO DA PRANCHA: VESTIÁRIO
DETALHAMENTO DAS VIGAS BALDRAME

DATA: MAIO/2022
ESCALA: INDICADA

DESENVOLVIMENTO: ALICE MORAES
ENG. CIVIL

Nº DA PRANCHA: EST
04/08

VERSÃO: V01
DESCRIÇÃO DA VERSÃO: