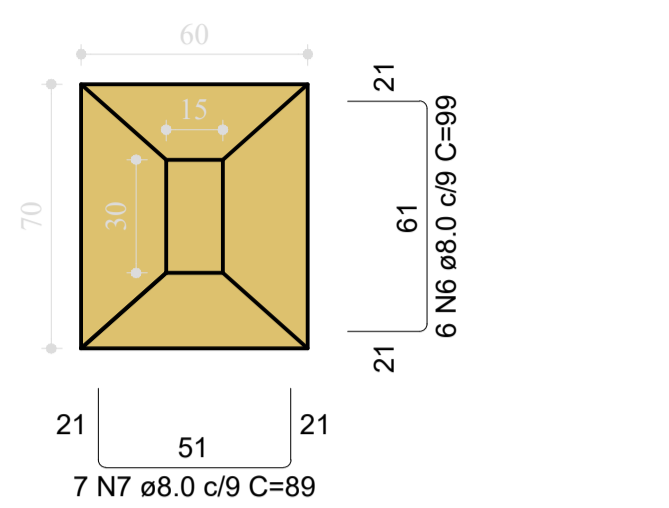
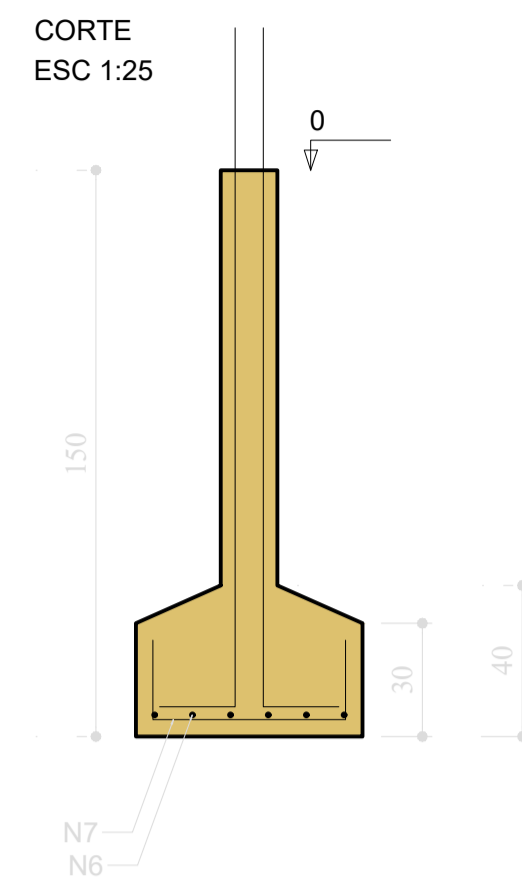


S6=S12=S13
PLANTA
ESC 1:25



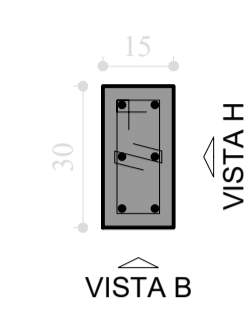
Solo com capacidade de suporte > 2.00 kgf/cm²
Solo compactado sobre a sapata
peso específico > 1600.00 kgf/m³



P6=P12=P13

FUNDAÇÃO - L1

SEÇÃO
ESC 1:20

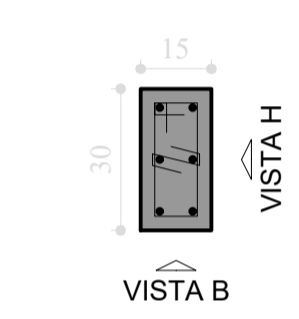


10 N2 ø5.0 C=77 2x3 N3 ø5.0 C=54
10 N1 ø5.0 C=24
3 N1 ø5.0 C=24

P8=P9=P10

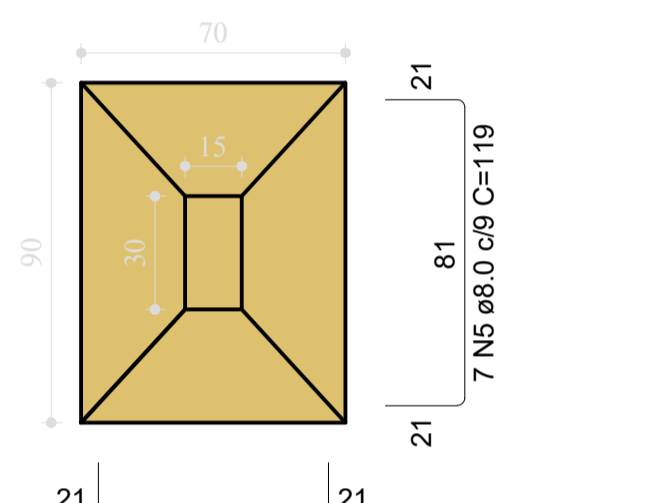
FUNDAÇÃO - L1

SEÇÃO
ESC 1:20

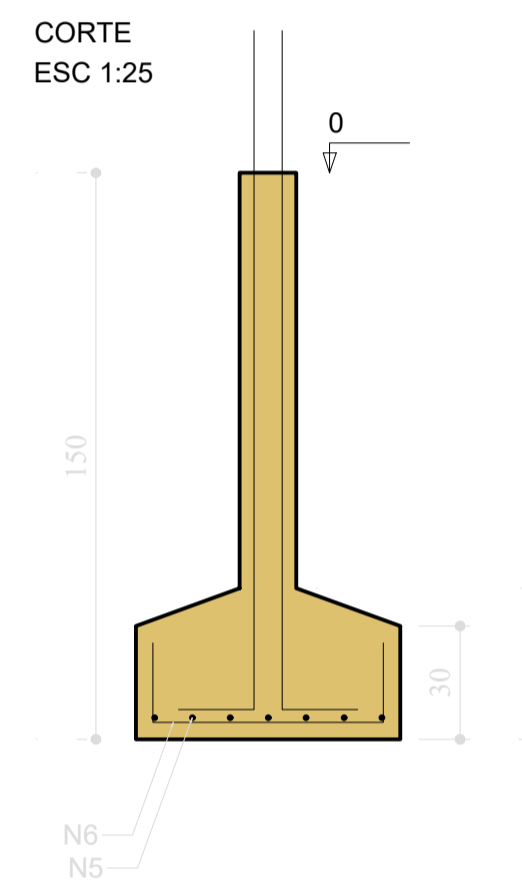


10 N2 ø5.0 C=77 2x3 N3 ø5.0 C=54
10 N1 ø5.0 C=24
3 N1 ø5.0 C=24

S2=S8=S9=S10
PLANTA
ESC 1:25



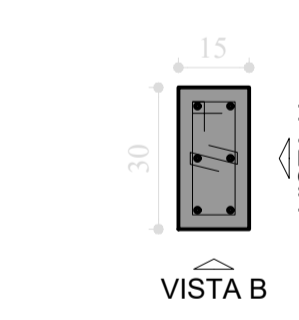
Solo com capacidade de suporte > 2.00 kgf/cm²
Solo compactado sobre a sapata
peso específico > 1600.00 kgf/m³



P3

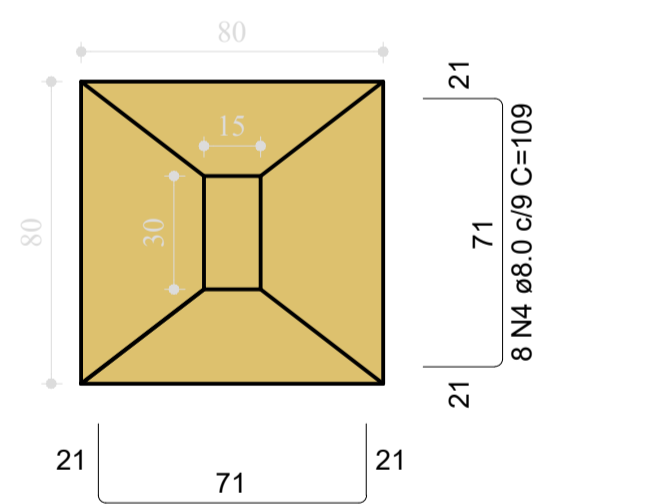
FUNDAÇÃO - L1

SEÇÃO
ESC 1:20

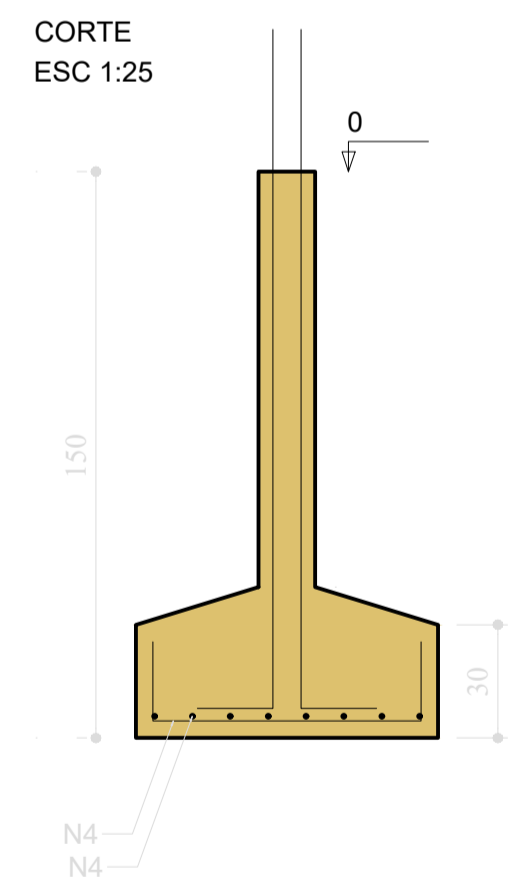


10 N2 ø5.0 C=77 2x3 N3 ø5.0 C=54
10 N1 ø5.0 C=24
3 N1 ø5.0 C=24

S3
PLANTA
ESC 1:25

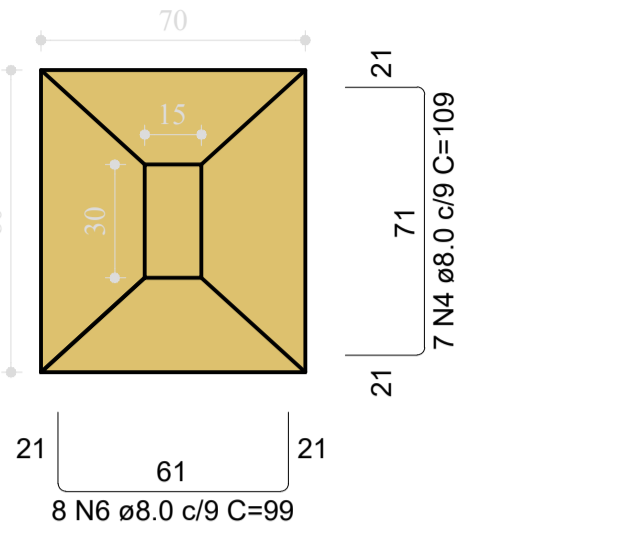


Solo com capacidade de suporte > 2.00 kgf/cm²
Solo compactado sobre a sapata
peso específico > 1600.00 kgf/m³



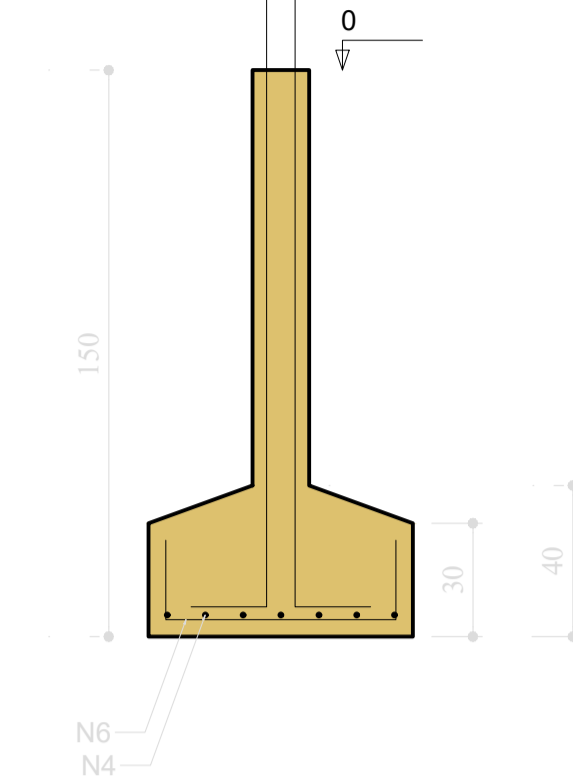
10 N2 ø5.0 C=77 2x3 N3 ø5.0 C=54
10 N1 ø5.0 C=24
3 N1 ø5.0 C=24

S4
PLANTA
ESC 1:25



Solo com capacidade de suporte > 2.00 kgf/cm²
Solo compactado sobre a sapata
peso específico > 1600.00 kgf/m³

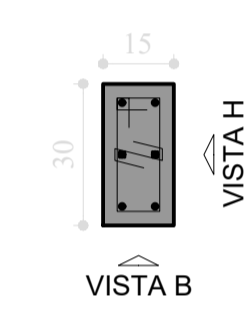
CORTE
ESC 1:25



P2

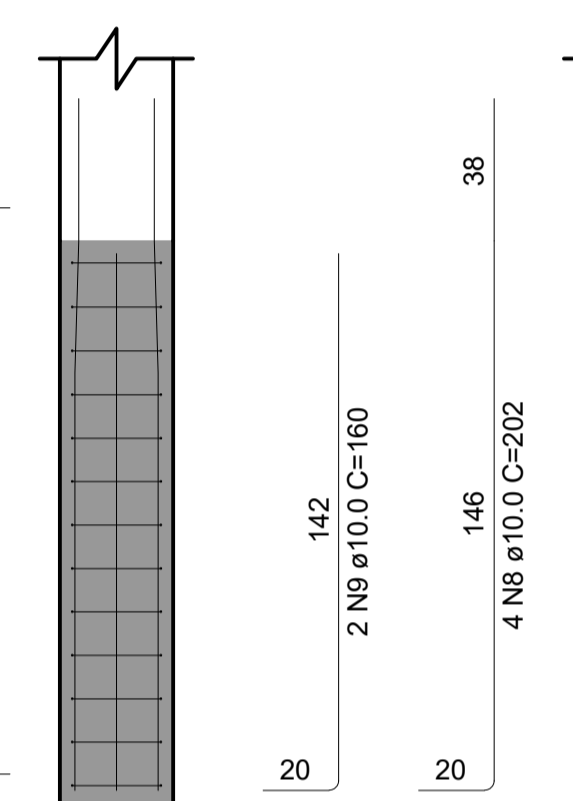
FUNDAÇÃO - L1

SEÇÃO
ESC 1:20



10 N2 ø5.0 C=77 2x3 N3 ø5.0 C=54
10 N1 ø5.0 C=24
3 N1 ø5.0 C=24

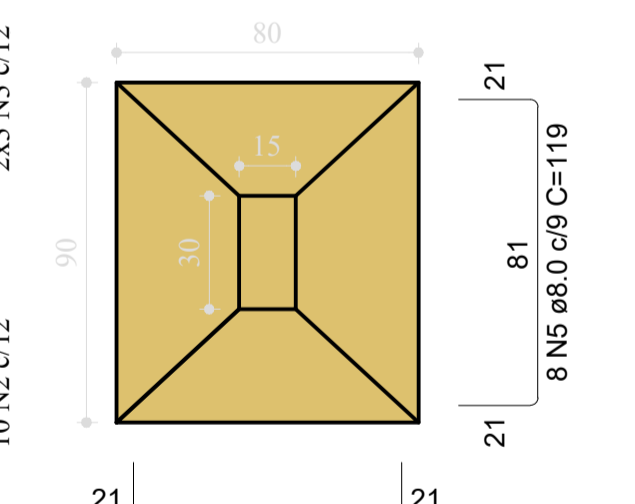
VISTA H
ESC 1:25



VISTA B
ESC 1:25

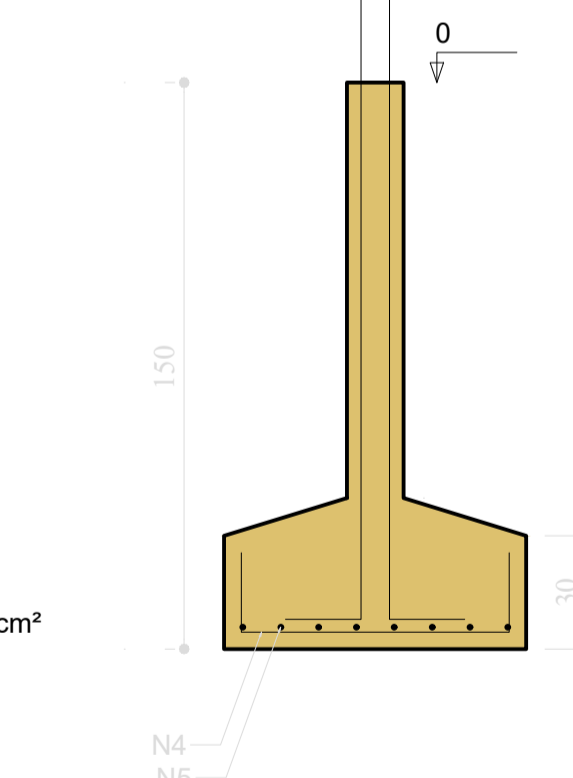


S1=S5=S7=S11
PLANTA
ESC 1:25



Solo com capacidade de suporte > 2.00 kgf/cm²
Solo compactado sobre a sapata
peso específico > 1600.00 kgf/m³

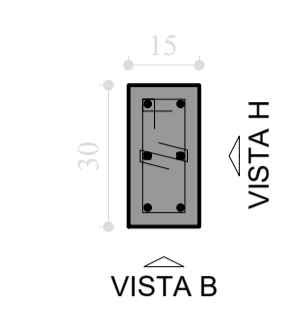
CORTE
ESC 1:25



P4

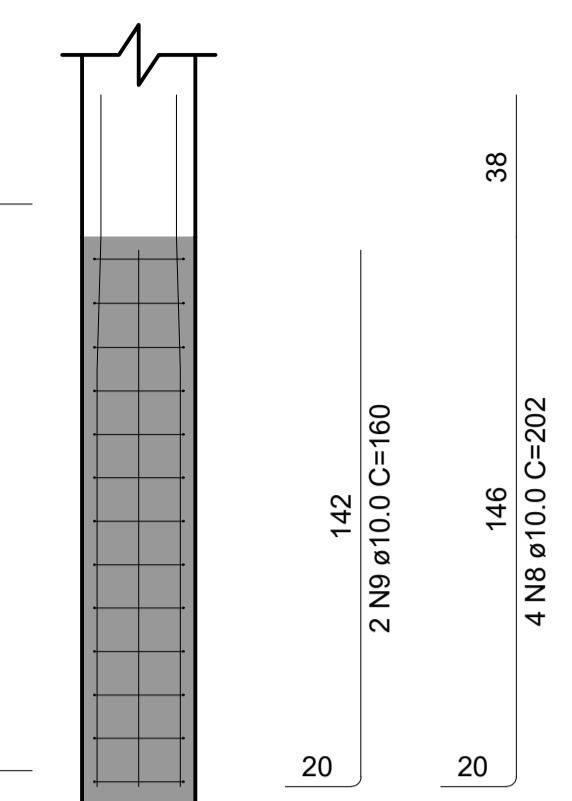
FUNDAÇÃO - L1

SEÇÃO
ESC 1:20

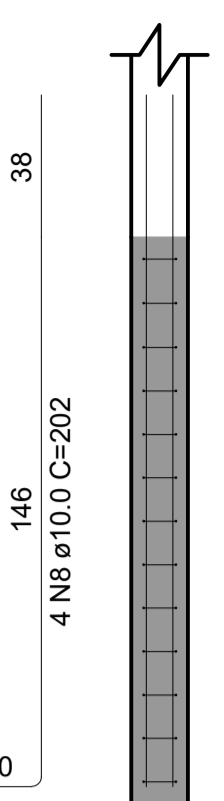


10 N2 ø5.0 C=77 2x3 N3 ø5.0 C=54
10 N1 ø5.0 C=24
3 N1 ø5.0 C=24

VISTA H
ESC 1:25



VISTA B
ESC 1:25



RELAÇÃO DO AÇO

AÇO	N	DIAM (mm)	QUANT	C.UNIT (cm)	C.TOTAL (cm)
CA60	1	5.0	169	24	4056
	2	5.0	130	77	10010
	3	5.0	78	54	4212
CA50	4	8.0	59	109	6431
	5	8.0	60	119	7140
	6	8.0	62	99	6138
	7	8.0	21	89	1869
	8	10.0	74	202	14948
	9	10.0	4	160	640

RESUMO DO AÇO

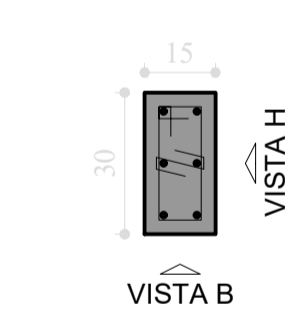
AÇO	DIAM (mm)	C.TOTAL (m)	PESO + 10% (kg)
CA50	8.0	215.8	93.7
CA60	5.0	182.8	105.7
PESO TOTAL (kg)			31
CA50		199.4	
CA60		31	

Volume de concreto (C-25) = 3.35 m³
Área de forma = 29.67 m²

P1=P5=P7=P11

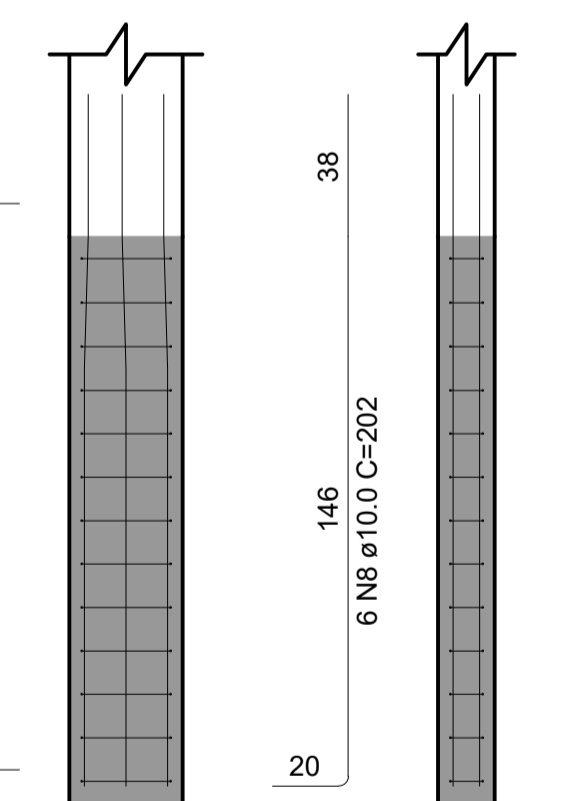
FUNDAÇÃO - L1

SEÇÃO
ESC 1:20

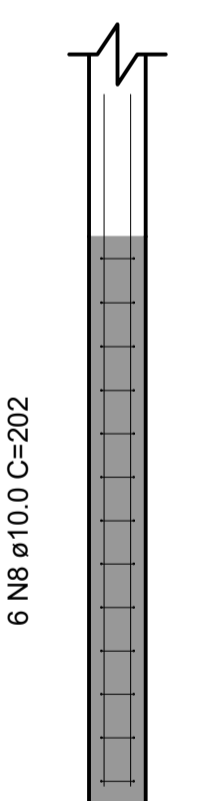


10 N2 ø5.0 C=77 2x3 N3 ø5.0 C=54
10 N1 ø5.0 C=24
3 N1 ø5.0 C=24

VISTA H
ESC 1:25



VISTA B
ESC 1:25



RESPONSÁVEL TÉCNICO:

Moraes
ALICE CATARINA OLIVEIRA DE MORAES
ENGENHEIRA CIVIL
CREA/PA 151666/2022



ESTABELECIMENTO: ESCOLA NOVA

ENDEREÇO: _____ LOTE: _____

PROJETO ESTRUTURAL

DESCRIÇÃO DA FRANQUIA: VESTIÁRIO DETALHAMENTO DAS SAPATAS	DATA: MAIO/2022	Nº DA FRANQUIA: EST 03/08
DESENVOLVIMENTO: ALICE MORAES ENG. CIVIL	ESCALA: INDICADA	

VERSÃO: V01

DESCRIÇÃO DA VERSÃO: