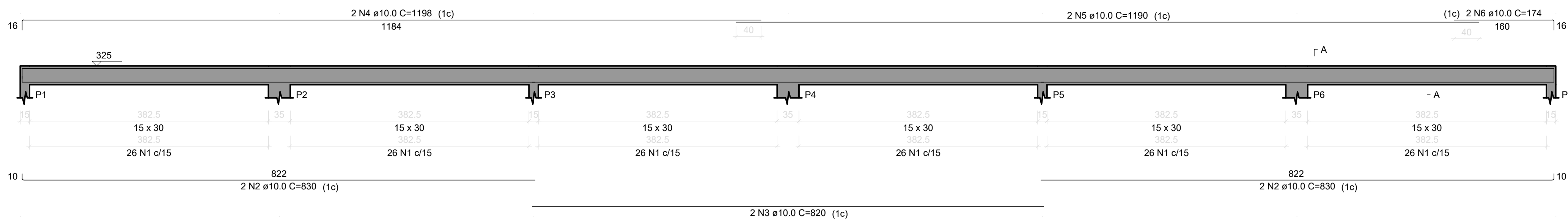
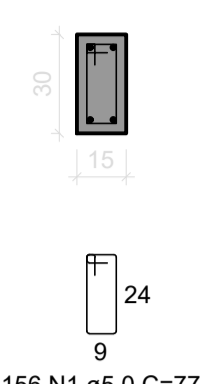


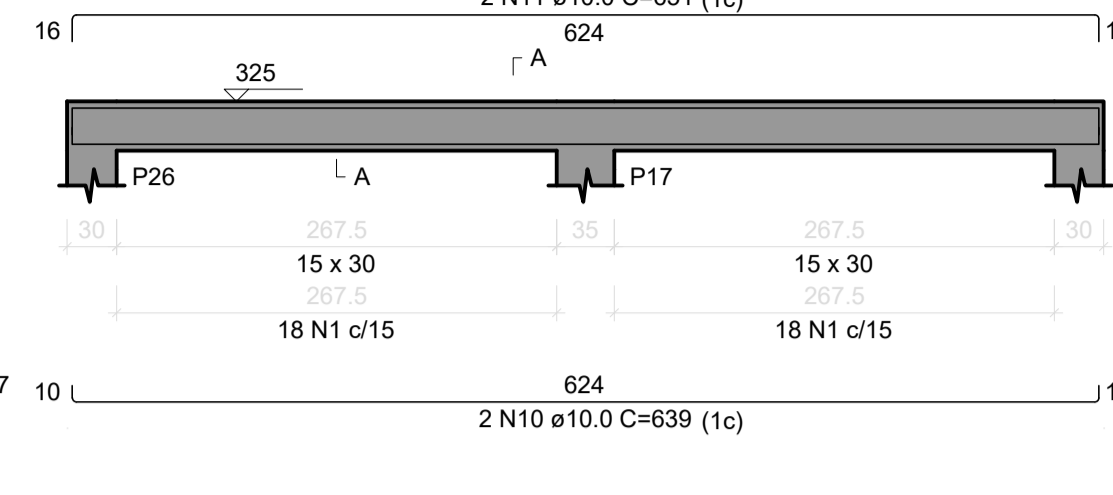
V1 = V3
ESC 1:50



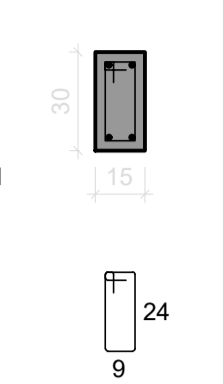
SEÇÃO A-A
ESC 1:25



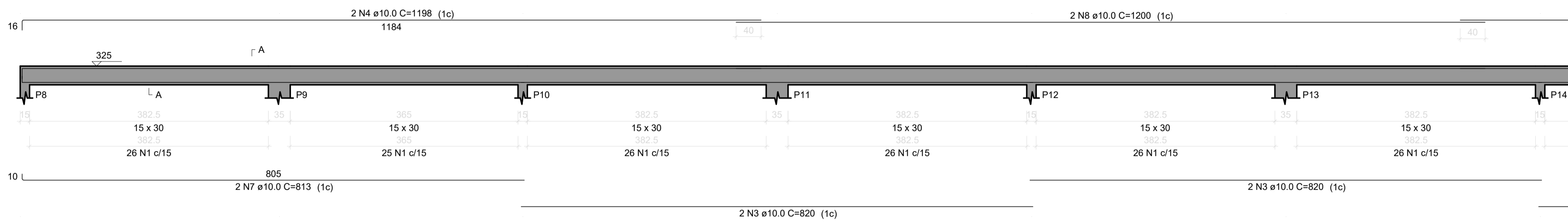
V5
ESC 1:50



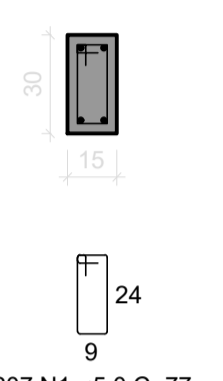
SEÇÃO A-A
ESC 1:25



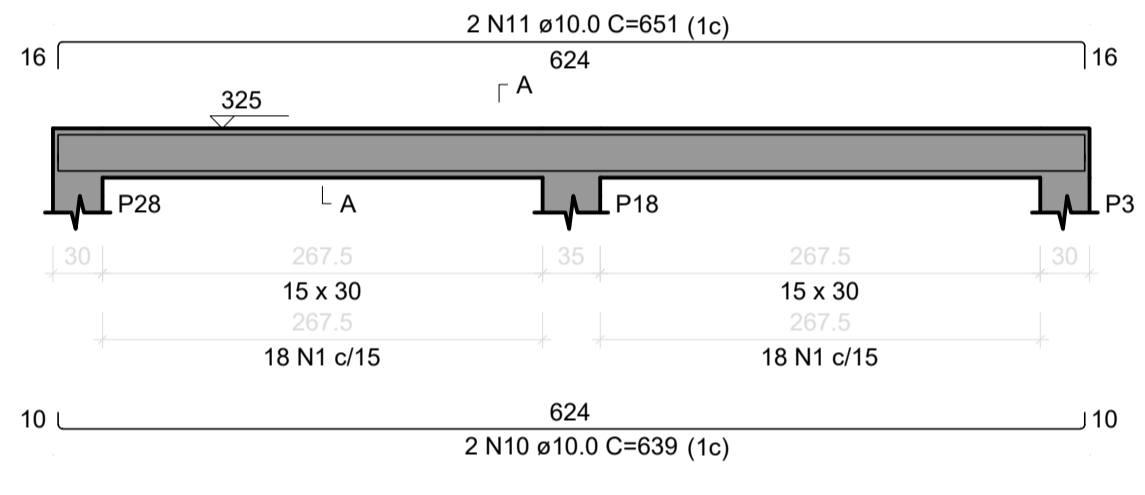
V2 = V4
ESC 1:50



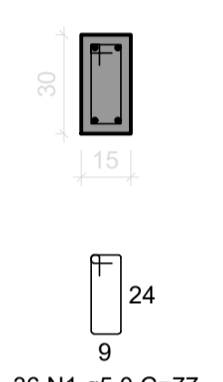
SEÇÃO A-A
ESC 1:25



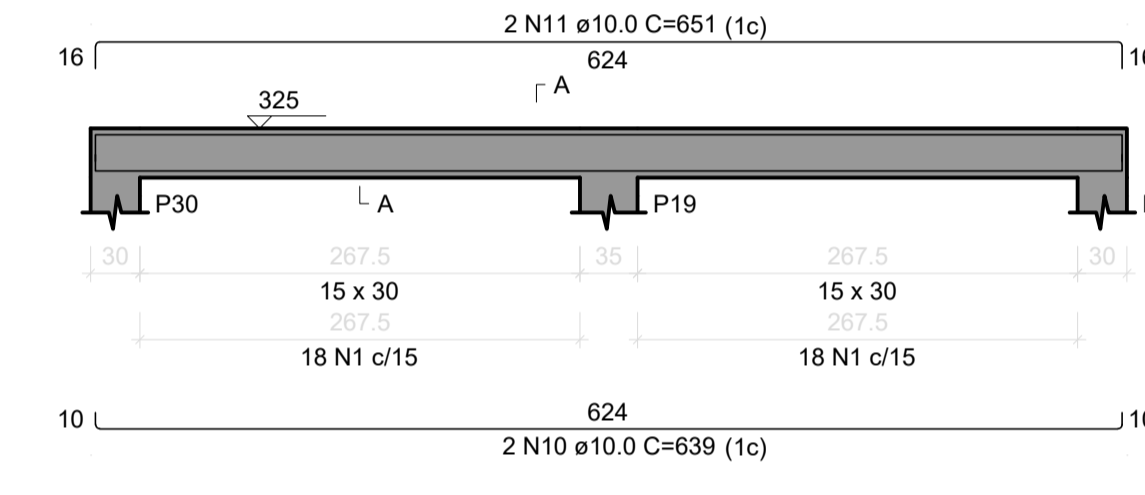
V6
ESC 1:50



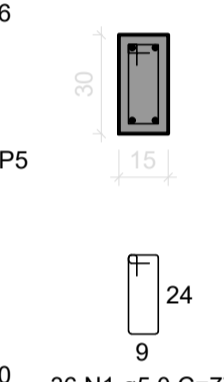
SEÇÃO A-A
ESC 1:25



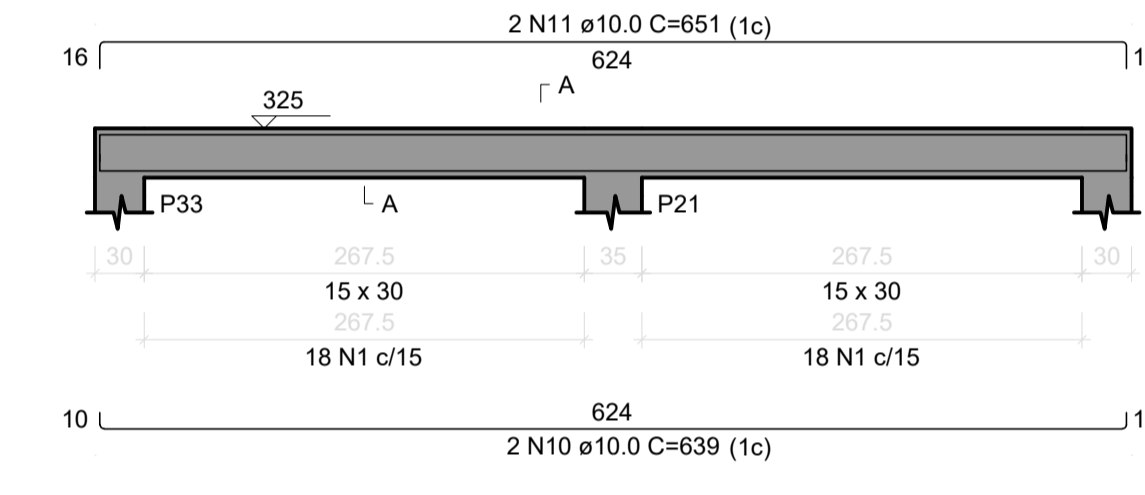
V7
ESC 1:50



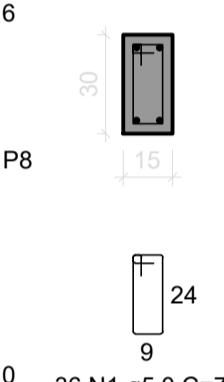
SEÇÃO A-A
ESC 1:25



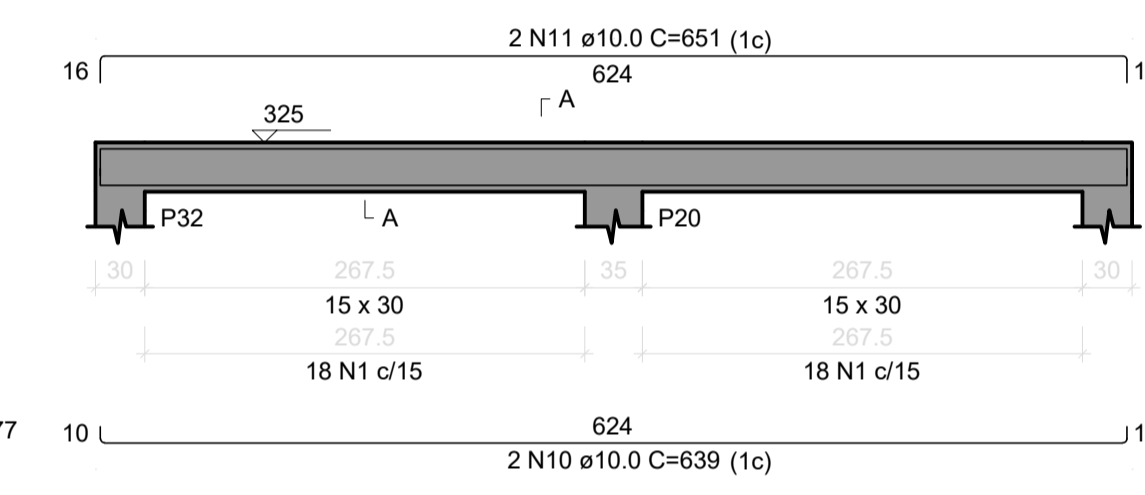
V8
ESC 1:50



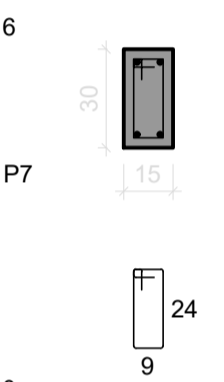
SEÇÃO A-A
ESC 1:25



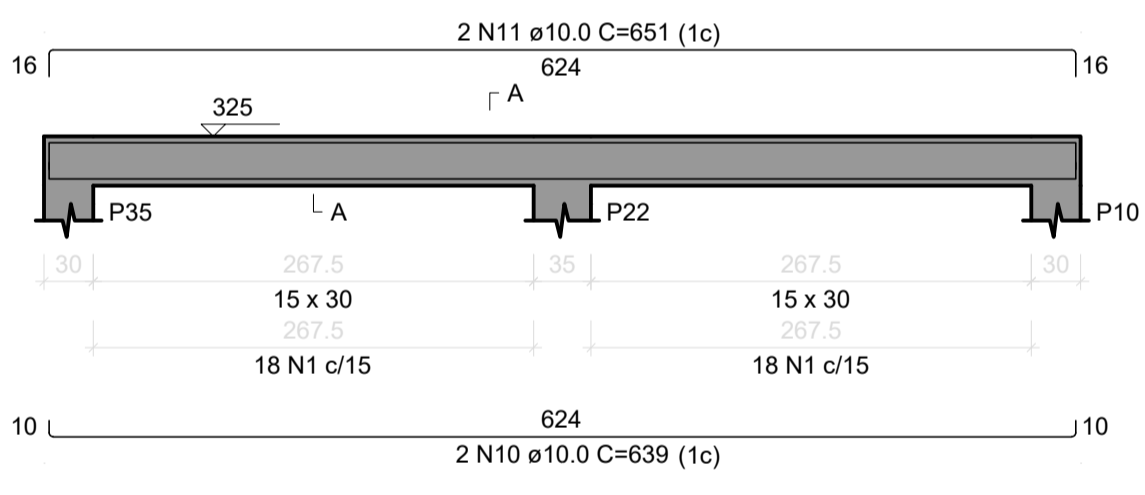
V9
ESC 1:50



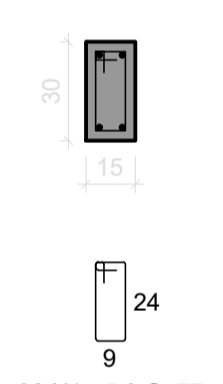
SEÇÃO A-A
ESC 1:25



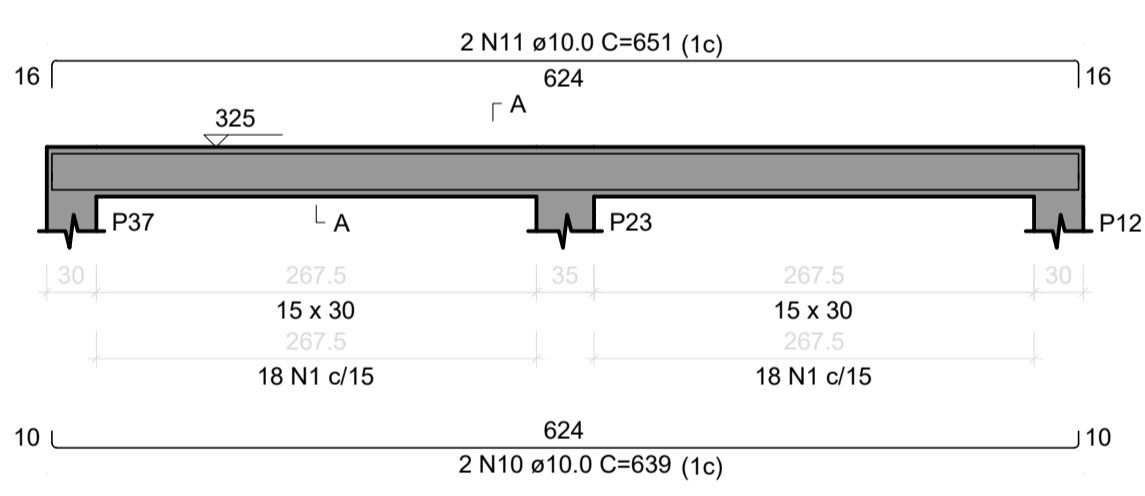
V10
ESC 1:50



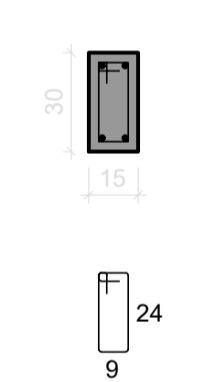
SEÇÃO A-A
ESC 1:25



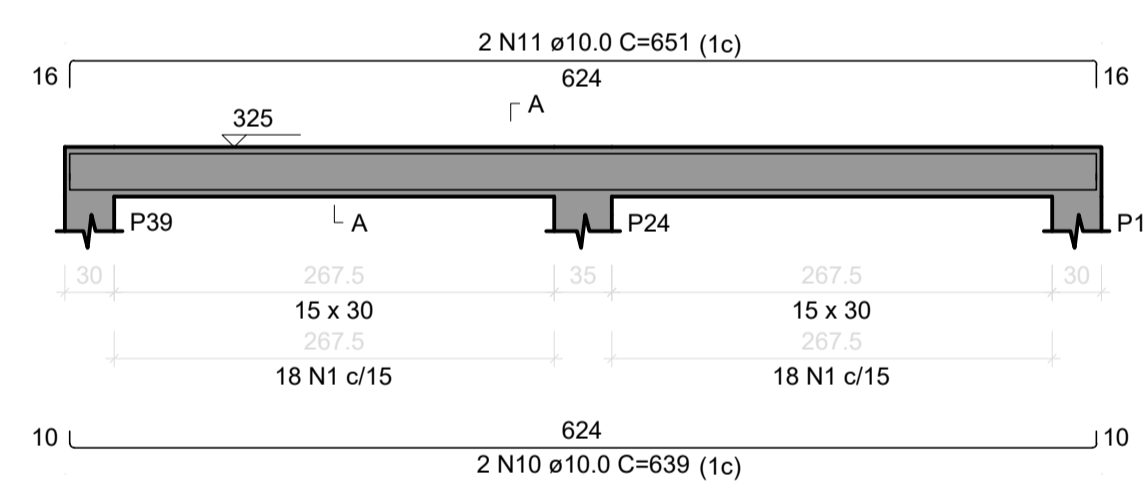
V11
ESC 1:50



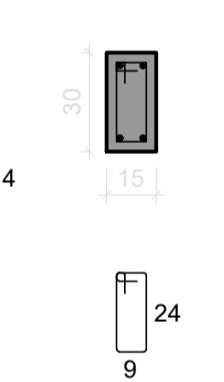
SEÇÃO A-A
ESC 1:25



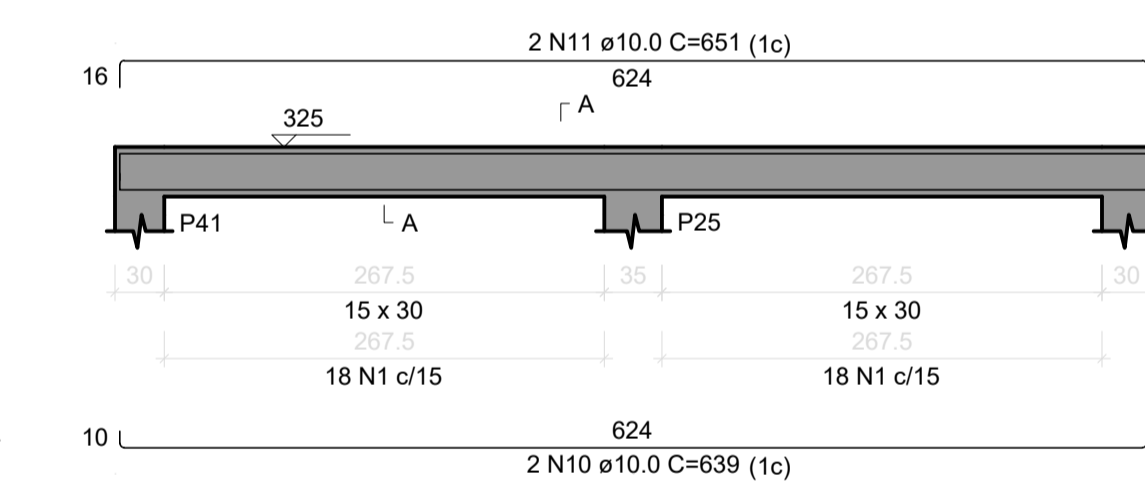
V12
ESC 1:50



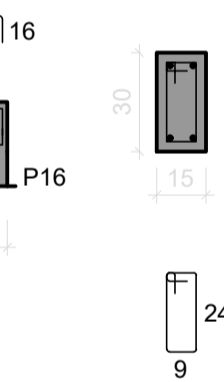
SEÇÃO A-A
ESC 1:25



V13
ESC 1:50



SEÇÃO A-A
ESC 1:25



RELAÇÃO DO AÇO

AÇO	N	DIAM (mm)	QUANT	C.UNIT (cm)	C.TOTAL (cm)
CA60	1	5.0	1050	77	80850
CA50	2	10.0	12	830	9960
	3	10.0	12	820	9840
	4	10.0	8	1198	9584
	5	10.0	4	1190	4760
	6	10.0	4	174	696
	7	10.0	4	813	3252
	8	10.0	4	1200	4800
	9	10.0	4	962	3848
	10	10.0	18	639	11502
	11	10.0	18	651	11718

RESUMO DO AÇO

AÇO	DIAM (mm)	C.TOTAL (m)	QUANT + 5% (Barras)	UNIT	PESO + 5% (kg)
CA50	10.0	699.6	62	12 m	452.9
CA60	5.0	808.5	-	rolo (170 kg)	130.8
PESO TOTAL (kg)					
CA50		452.9			
CA60		130.8			

Volume de concreto (C-25) = 6.97 m³
Área de forma = 128.29 m²

RESPONSÁVEL TÉCNICO:

 ALICE CATARINA OLIVEIRA DE MORAES
 ENGENHEIRA CIVIL
 CREA-151866932-PA

Nossa cidade, nosso compromisso!

ESTABELIMENTO: **CONSTRUÇÃO DE ESCOLA 12 SALAS**

ENDEREÇO: AV. FLORES DA CUNHA, IPIXUNA DO PARÁ

DESCRIÇÃO DA PRANCHA: DETALHAMENTO DAS VIGAS DE COBERTURA

DATA: MAIO/2022

ESCALA: INDICADA

DESENVOLVIMENTO: ALICE MORAES

Nº DA PRANCHA: **EST 07/08**

VERSÃO: V01