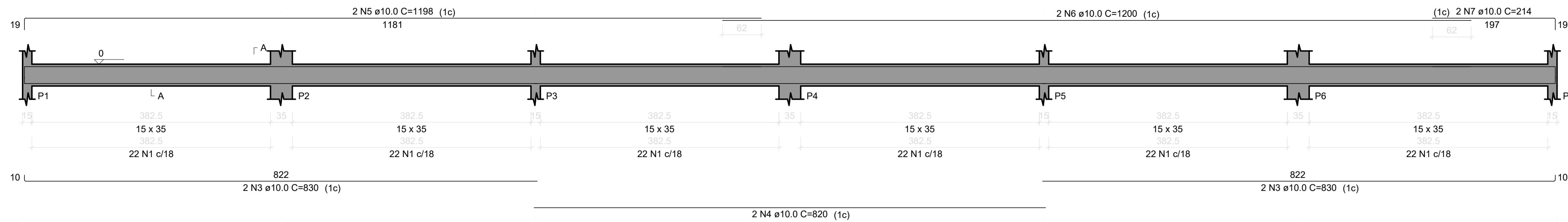
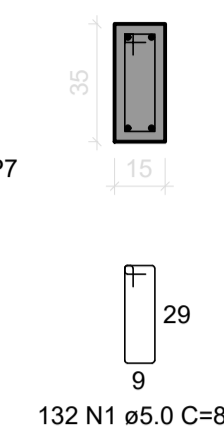


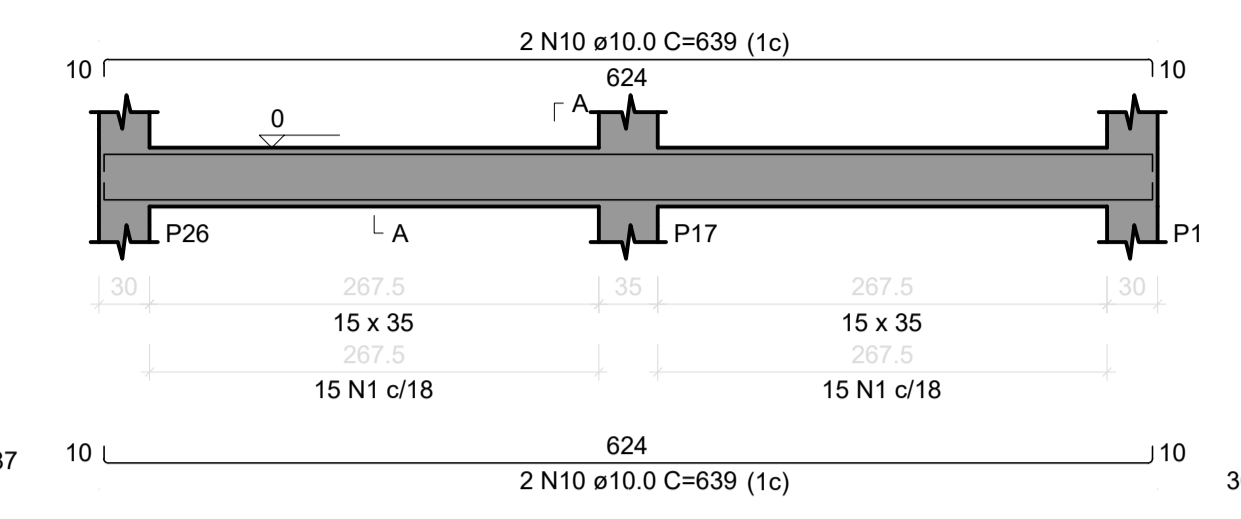
V.BAL1 = V.BAL3
ESC 1:50



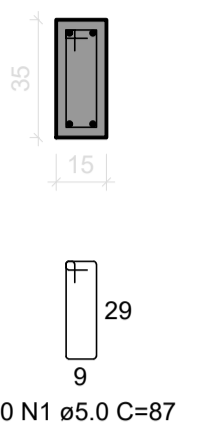
SEÇÃO A-A
ESC 1:25



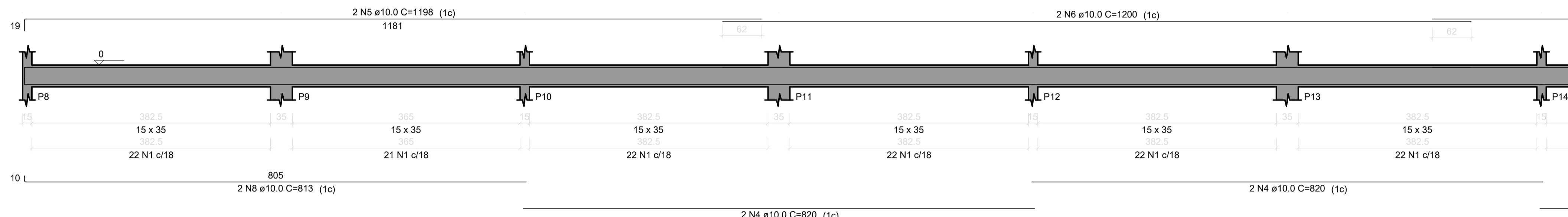
V.BAL5
ESC 1:50



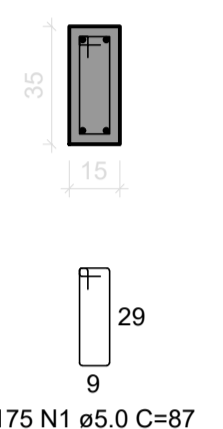
SEÇÃO A-A
ESC 1:25



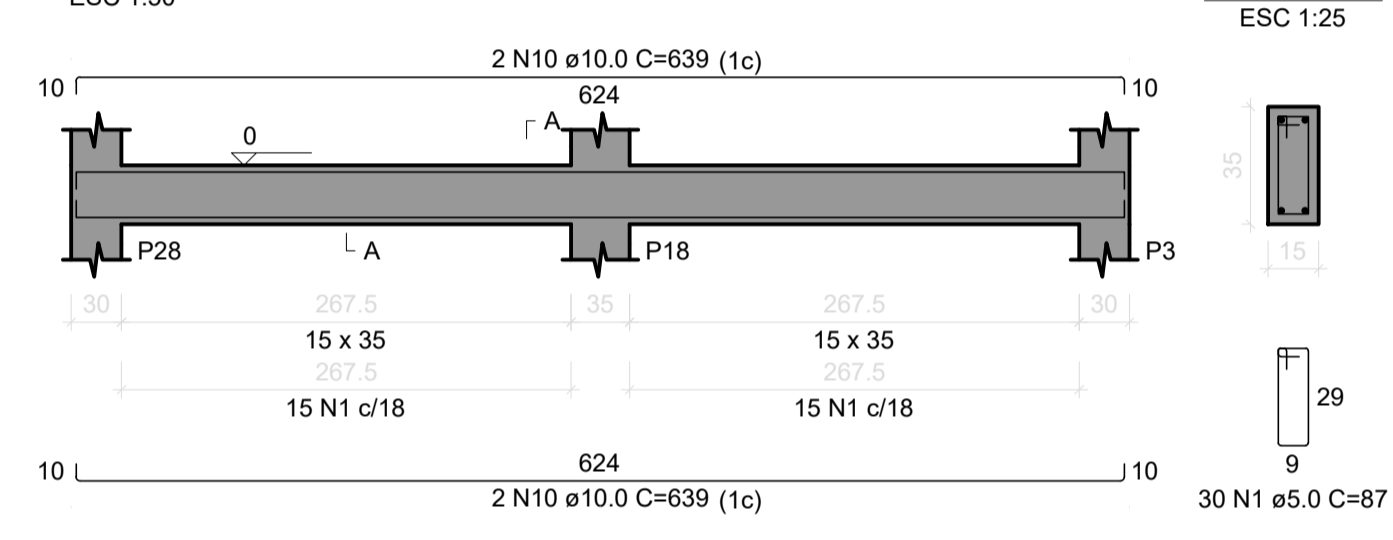
V.BAL2 = V.BAL4
ESC 1:50



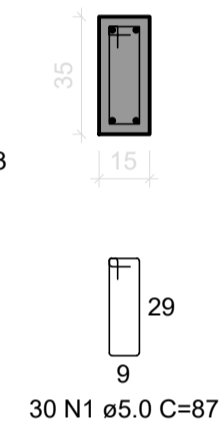
SEÇÃO A-A
ESC 1:25



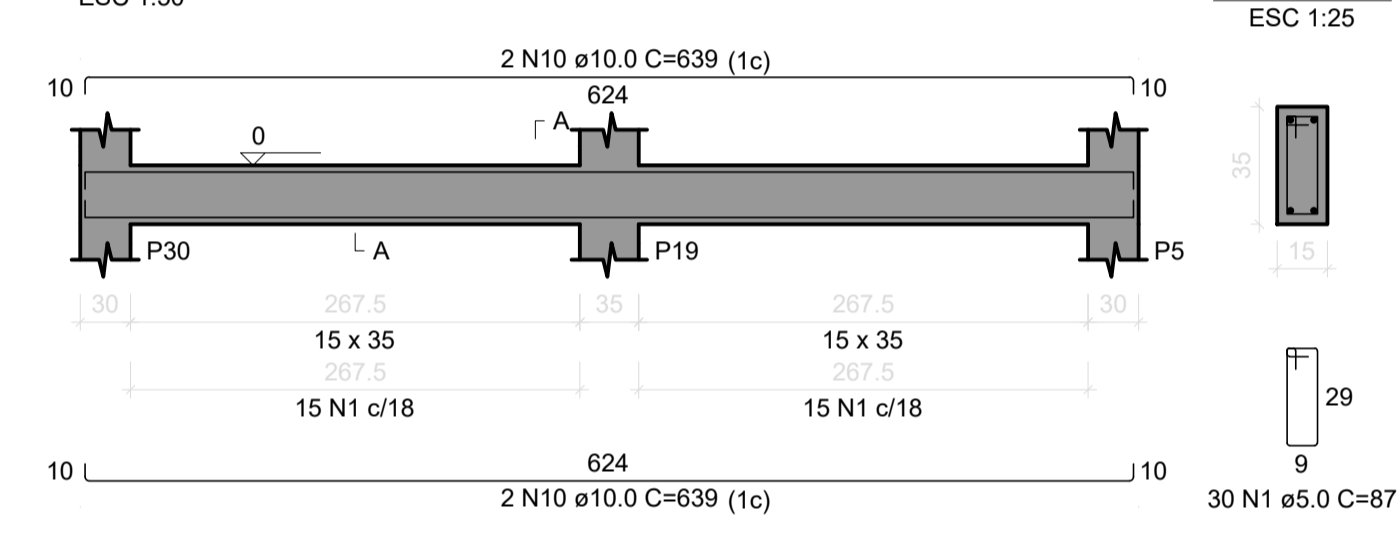
V.BAL6
ESC 1:50



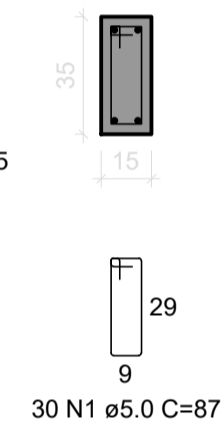
SEÇÃO A-A
ESC 1:25



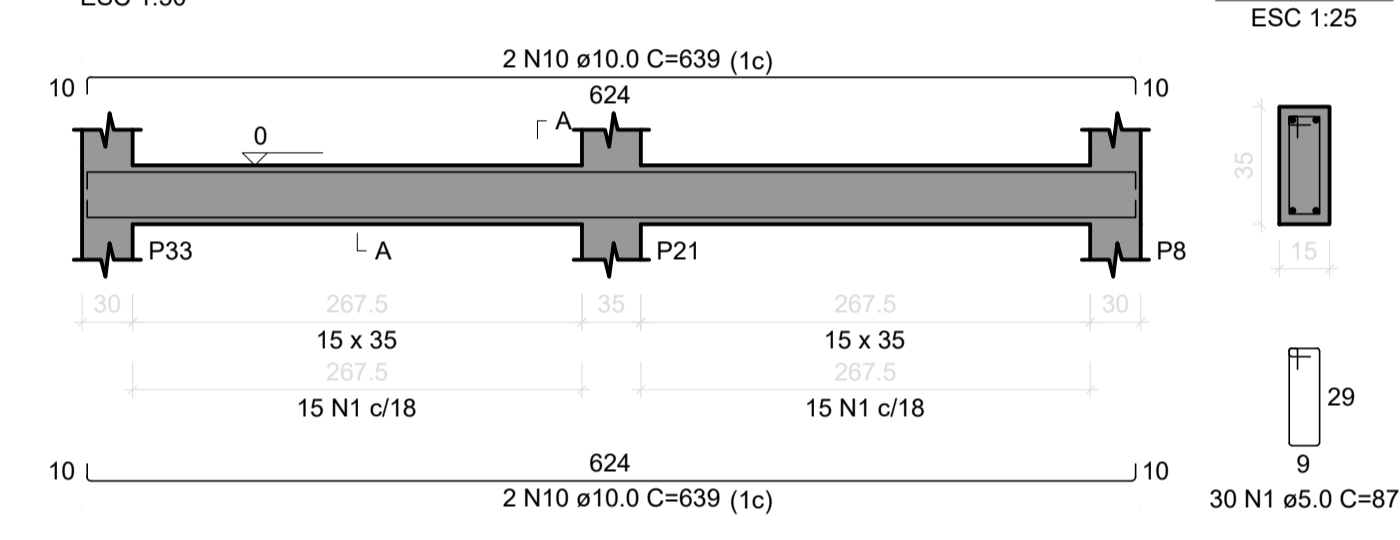
V.BAL7
ESC 1:50



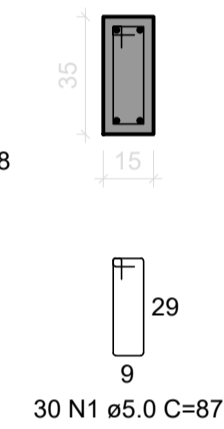
SEÇÃO A-A
ESC 1:25



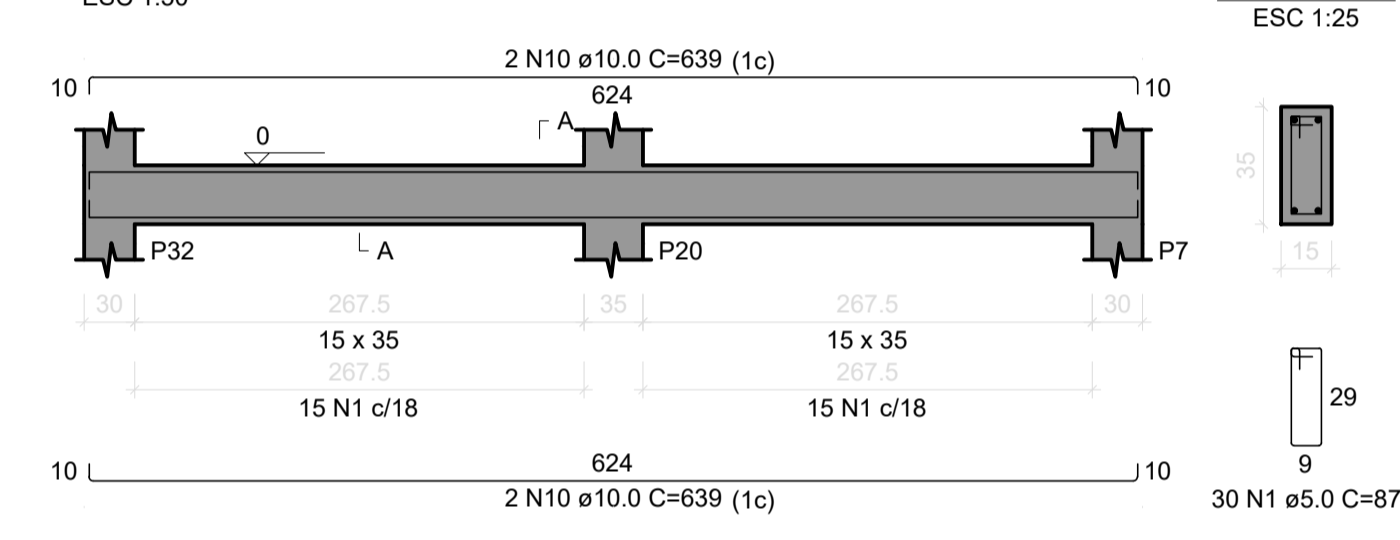
V.BAL8
ESC 1:50



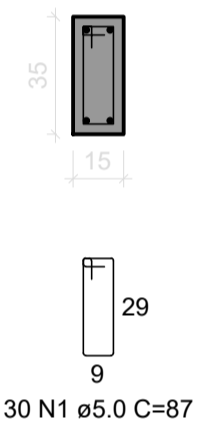
SEÇÃO A-A
ESC 1:25



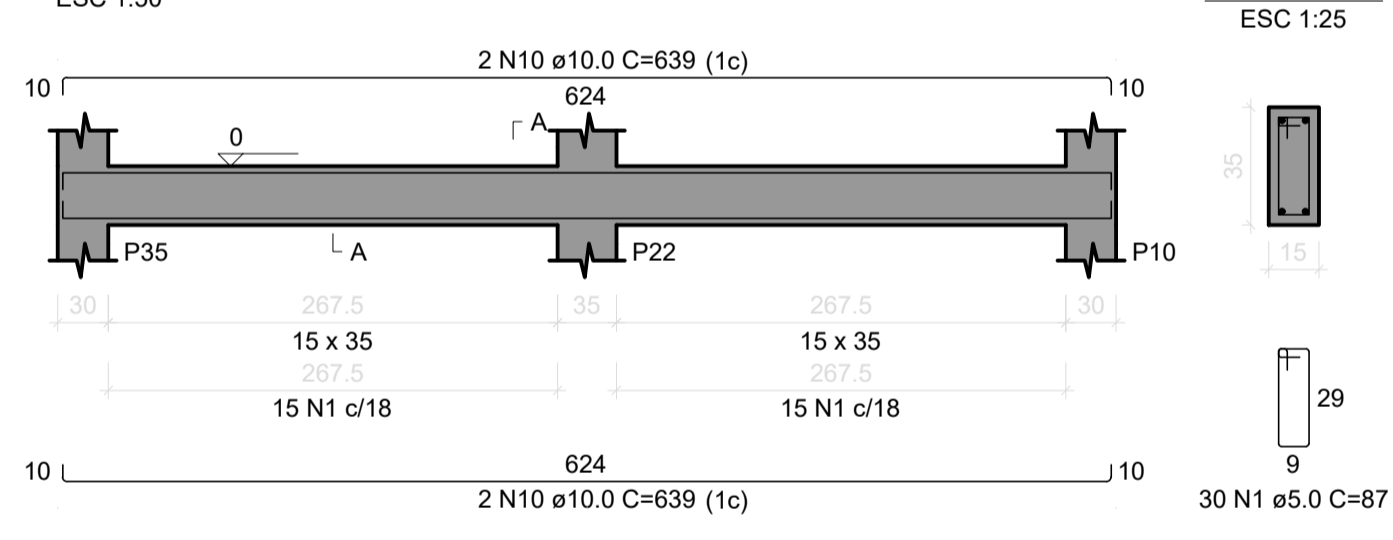
V.BAL9
ESC 1:50



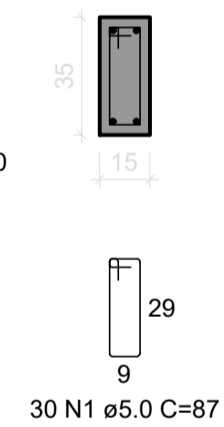
SEÇÃO A-A
ESC 1:25



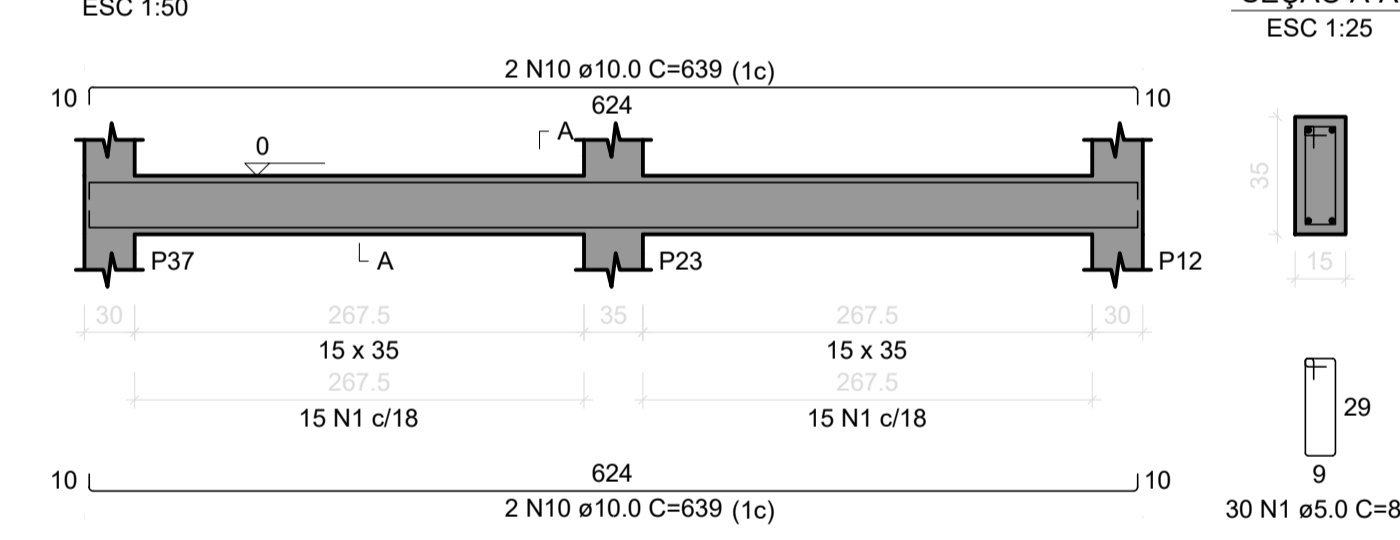
V.BAL10
ESC 1:50



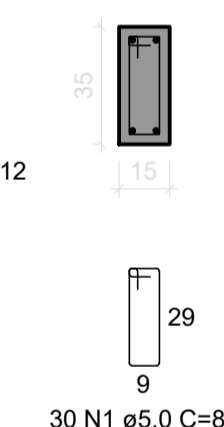
SEÇÃO A-A
ESC 1:25



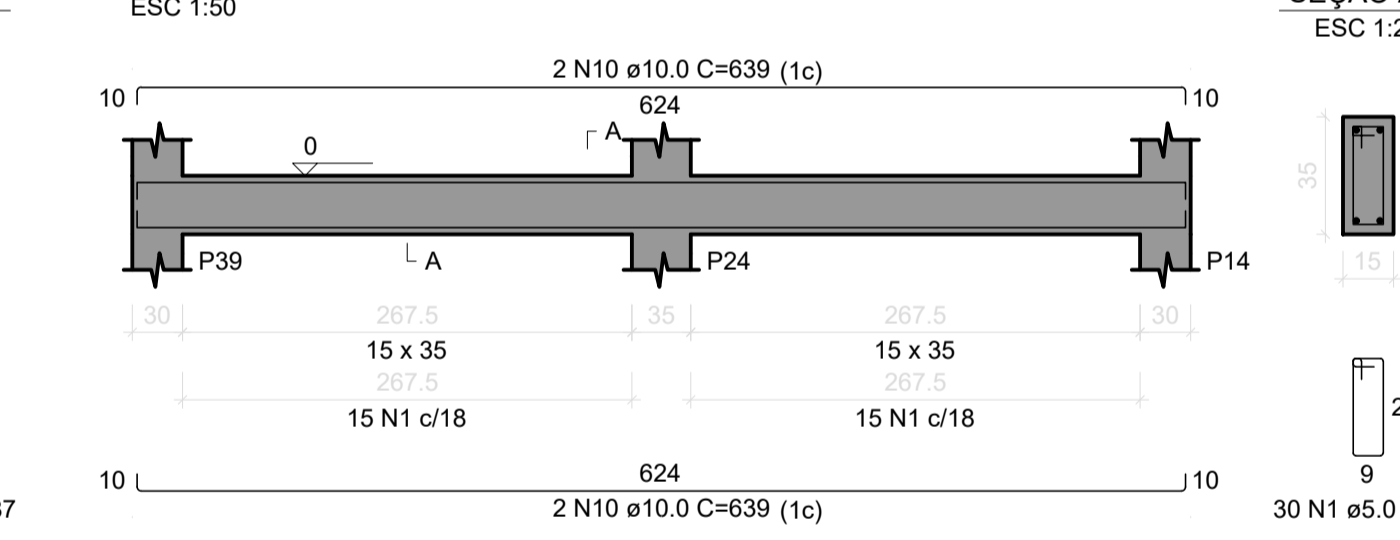
V.BAL11
ESC 1:50



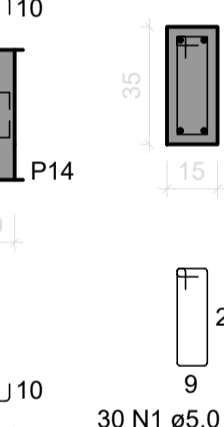
SEÇÃO A-A
ESC 1:25



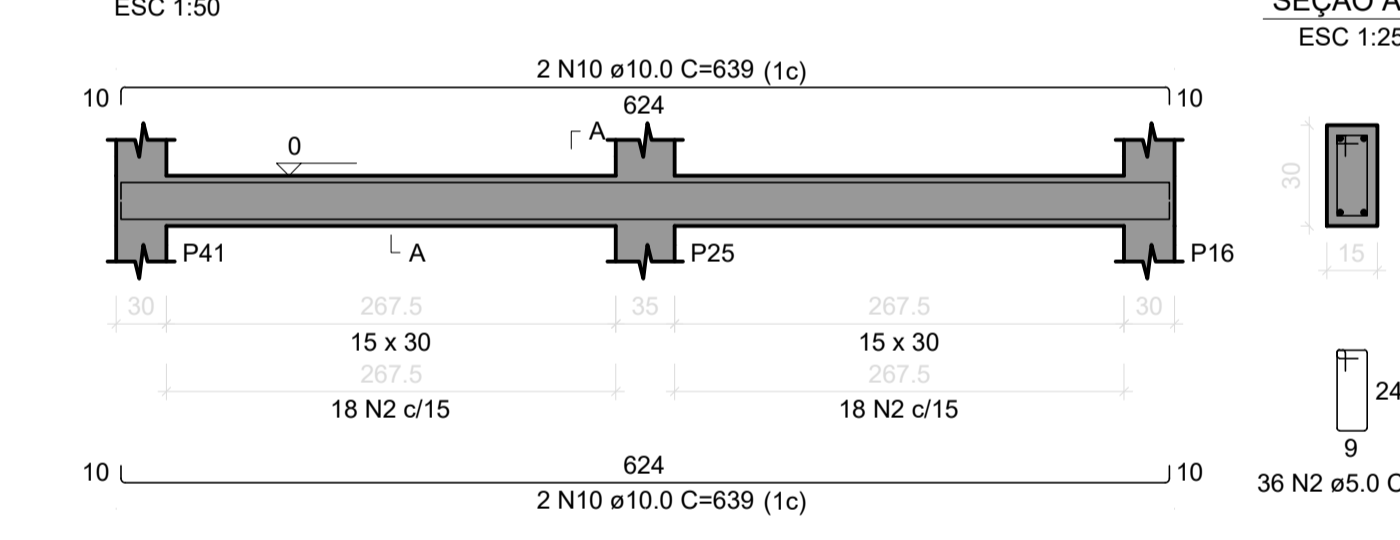
V.BAL12
ESC 1:50



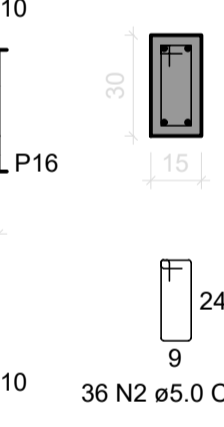
SEÇÃO A-A
ESC 1:25



V.BAL13
ESC 1:50



SEÇÃO A-A
ESC 1:25



RELAÇÃO DO AÇO

V.BAL1	V.BAL2	V.BAL3
V.BAL4	V.BAL5	V.BAL6
V.BAL7	V.BAL8	V.BAL9
V.BAL10	V.BAL11	V.BAL12
V.BAL13		

AÇO	N	DIAM (mm)	QUANT	C.UNIT (cm)	C.TOTAL (cm)
CA60	1	5.0	854	87	74298
	2	5.0	36	77	2772
	3	10.0	12	830	9960
	4	10.0	12	820	9840
	5	10.0	8	1198	9584
	6	10.0	8	1200	9600
	7	10.0	4	214	856
	8	10.0	4	813	3252
	9	10.0	4	1011	4044
	10	10.0	36	639	23004

RESUMO DO AÇO

AÇO	DIAM (mm)	C.TOTAL (m)	QUANT + 5% (Barras)	UNIT	PESO + 5% (kg)
CA50	10.0	701.4	62	12 m	454.1
CA60	5.0	770.7	-	rolo (170 kg)	124.7
PESO TOTAL (kg)					
CA50					454.1
CA60					124.7

Volume de concreto (C-25) = 8.09 m³
Área de forma = 144.76 m²

RESPONSÁVEL TÉCNICO:
ALICE CATARINA OLIVEIRA DE MORAES
ENGENHEIRA CIVIL
CREA: 151686632-PA

ESTABELECIMENTO: CONSTRUÇÃO DE ESCOLA 12 SALAS
ENDEREÇO: AV. FLORES DA CUNHA, IPIXUNA DO PARÁ
UR/USE:

DESCRIÇÃO DA PRANCHA: DETALHAMENTO DAS VIGAS BALDRAME
DATA: MAIO/2022
ESCALA: INDICADA
DESENVOLVIMENTO: ALICE MORAES
Nº DA PRANCHA: EST 05/08

VERSÃO: V01
DESCRIÇÃO DA VERSÃO: